

Bargains
Galore
Inside
and
Outside

SIDEWALK SALE

Friday
and
Saturday,
Aug. 13-14

WEATHER

	Min.	Max.	Precip.
Wednesday, Aug. 10	57	75	0.00
Thursday, Aug. 11	59	80	0.00
Friday, Aug. 12	49	85	0.00
Saturday, Aug. 13	55	79	0.00
Sunday, Aug. 14	53	90	0.00
Monday, Aug. 15	58	92	0.00
Tuesday, Aug. 16	60	95	1.08

By H. K. L.

The Chelsea Standard

QUOTE

"Continued dependence upon relief induces a spiritual and moral disintegration fundamentally destructive to the national fibre."
—Franklin D. Roosevelt.

ONE HUNDRED-SECOND YEAR—No. 8

14 Pages This Week

CHELSEA, MICHIGAN, THURSDAY, AUGUST 12, 1971

15c per copy

SUBSCRIPTION: \$4.00 PER YEAR

Kids Day Parade Will Open Fair Tuesday, Aug. 24

Details of two fun-filled Community Fair events, the annual Kiwanis Kids Day Parade and the first balloon ascension contest, were released today.

The Kids Day Parade will mark the beginning of the fair again this year.

Participants will assemble in the large village parking lot on Tuesday, Aug. 24 at 5:45 p.m. All entries will be registered at that time and the parade will begin at 6:30 p.m.

Parade co-ordinator George Meranuck states that 12 prizes—three in each of four age groups—will be awarded. First prize winners will receive \$5, second prize winners \$2, and third prize winners \$1 each.

Thieves Enter Restaurant Tuesday Night

Chelsea police are investigating a breaking and entering at the Chelsea Restaurant, 119 S. Main, in which \$114 in change was stolen. The theft occurred sometime between 11 p.m. Tuesday and 5 a.m. Wednesday when Nowi Laraway and Ruth Luensen discovered that the rear door of the restaurant had been forced open.

The burglar escaped with the money and a brown cash box. The restaurant is owned by Ella McMillan.

Sunday, Aug. 8, Mannith Armstrong, 415 E. Main St., Manchester, was arrested on a felony warrant issued by the Clinton Post of the Michigan State Police by Chelsea Police Department officers Bruce Sibert and Jack Detling.

He was arrested without incident at a home on Arthur St., where he was visiting.

Armstrong was turned over to officers from the Clinton State Police Post following the arrest.

A bicycle belonging to Dale Poertner, 420 Chandler St., was stolen Monday, Aug. 9 outside Chelsea Lumber Co.

The red, 20-inch, Colombia Stingray boy's bike has no fenders, and bears license No. 0118. Chelsea police are investigating.

(Continued on page six)

First Football Practice Set For Aug. 23

Chelsea football players and their coaches are gearing up for the start of the football season. Pre-season activities, including the issuing of equipment, physicals and the all-important first practice have been announced by Head Coach Phil Bareis.

The first practice session for both Junior and Senior High teams will be held Aug. 23.

Varsity coaches this year will be Phil Bareis, Jim Tallman and Richard Bareis.

Junior Varsity and freshmen will meet at 9 a.m. in the gym. Coaches Jon Schaffner, Paul Terpstra, and Bill Bainton will conduct the practices.

All boys going out for football must have a physical examination before practice sessions begin. They may make an appointment with any doctor. Cost for the physical at the Chelsea Medical Clinic is \$10. Dr. J. V. Fisher charges \$7.

Shoes will be available to all Junior and Senior High players on Saturday, Aug. 14 from 9 a.m. to 12 noon. There will be all sizes and styles of shoes which range in cost from \$8 to \$30. Coach Bareis said that the average price will be around \$15 to \$17 (up \$2 from last year). He reminds potential players that they can save money by buying a good pair of used shoes.

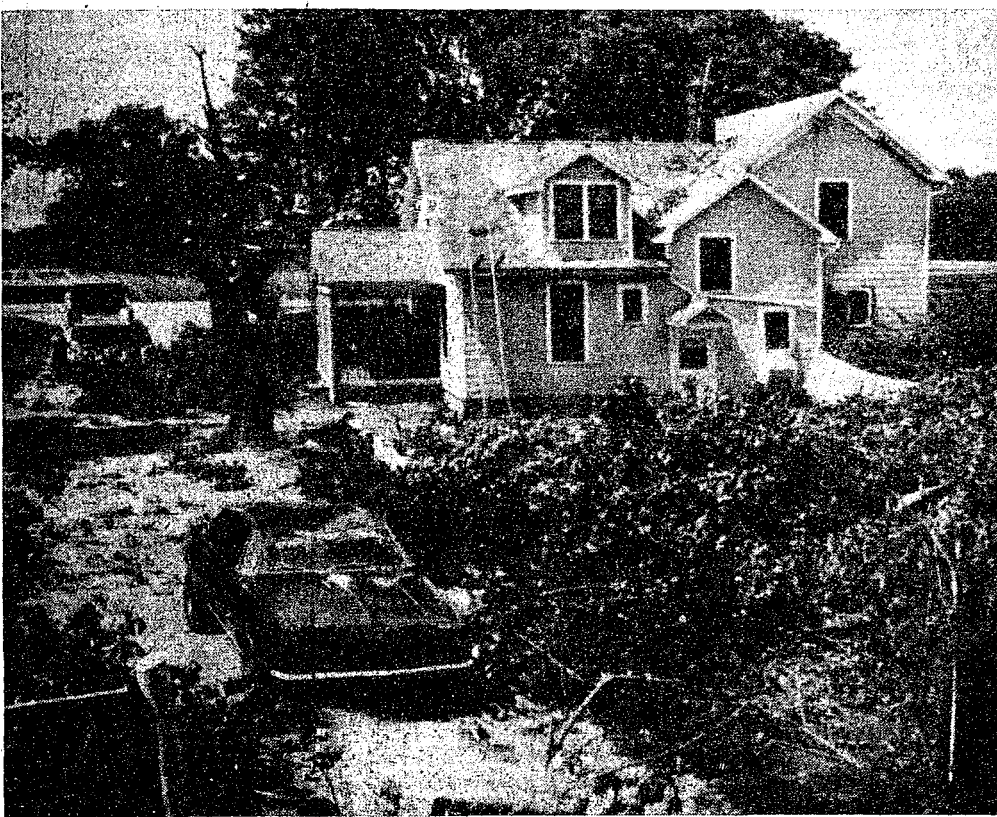
Varsity lettermen and juniors and seniors will be issued equipment between 9 and 10 a.m., juniors and seniors between 10 and 11 a.m. on Aug. 21. Lettermen will 12 noon. Sophomores and freshmen will get their equipment during the first week of practice.

Both shield and impression type mouthpieces will be used this year. They will each cost \$1. Impressions will be taken at 1:30 p.m. (Continued on page six)

Queen Candidates Must Be Entered Before Saturday

All area organizations should have their candidates for Chelsea Community Fair Queen contact Mrs. David Rowe, chairman of the fair queen committee, before the Saturday, Aug. 14 entry deadline. Mrs. Rowe may be reached at 475-8065.

Queen candidates must attend a meeting at 7:30 p.m. Monday, Aug. 16 at the home of Mrs. Rowe, 157 E. Summit St.



STORM AFTERMATH: The Robert Bauers, 375 S. Freer Rd., were hard hit by Tuesday's quick but powerful storm. Two large maple trees were split by the force of the wind and had to be cut down. Jim Bauer, 18, suffered double mis-

fortune from the storm. He was cut when glass blew out of windows he was trying to close, and his new car was badly damaged by a large falling limb.

Waste Disposal System OK'd at Chelsea Plant

A new phosphate liquid waste disposal system that meets state and federal specifications is in operation at North American Rockwell's Automotive Products Division mechanical spring plant here.

The system pumps phosphates back into the plant's system to be reused while allowing a controlled level of rinse waters to be released into the village sewage system. (Continued on page six)

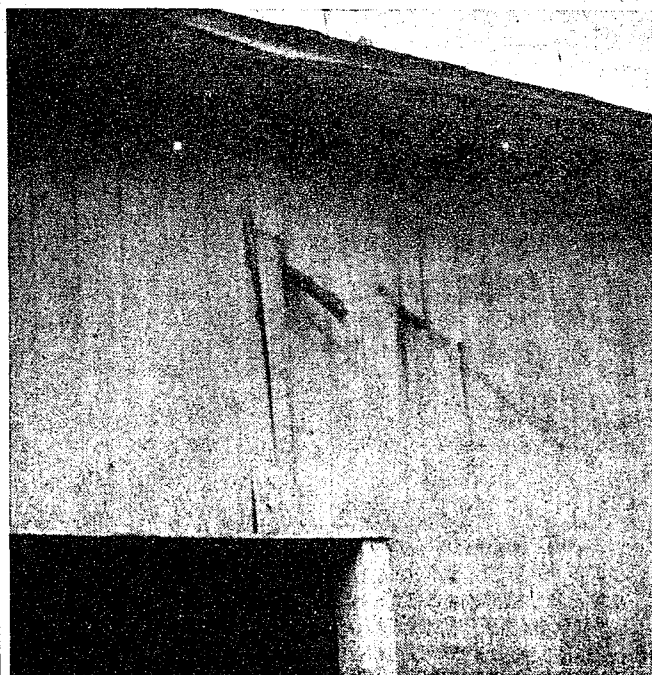
Inverness Junior Girls Golf Tourney Won By J. Haselschwardt

Winner of the Inverness Junior Girls low gross medal play with handicap golf tournament was Jeanne Haselschwardt with a score of 72.

The tournament, which was open to girls from 10 to 17, was played Aug. 9-10.

Runner-up was Eleanor Musolf, who had a score of 79.

Trophies will be presented at the Ladies Day annual luncheon, Aug. 28.



STORM POWER: Small branches were driven through the siding on the Robert Bauer barn, 375 S. Freer Rd., by the strong wind that blew through the area late Tuesday afternoon. The wind put a 90 degree twist in a steel wagon frame, and also blew the hay rack completely off the wagon. Another wagon was left half in—half out of the barn's loft. Observers feel there must certainly have been a small, localized twister at this location.

Sidewalk Sale Bargain Event Begins Friday

Friday and Saturday are the days when Chelsea merchants move their wares onto the streets for the 15th annual sidewalk sale.

Shoppers in downtown Chelsea will find fantastic bargains among the colorful sidewalk display tables.

The practice of selling merchandise in the open air dates back to pioneer days, and was common in this area 100 years ago.

The current series of sidewalk sales began in October, 1957, but the month for the sale was gradually moved forward by merchants to offer shoppers greater bargains on summer items. Wise shoppers take advantage of the sales to find some back-to-school busy, too.

This year the Chelsea Jaycee Auxiliary will be manning a hot dog and pop stand for the convenience of busy shoppers. The stand will be open from 11 a.m. to 9 p.m. on Friday, and 11 a.m. to 6 p.m. on Saturday. Proceeds from the stand will be used to support local projects in mental health areas, Chairman Judy Eubanks said.

Be there, Aug. 14 and 15 for fun, food and great buys on everything from sun-tan oil to power lawnmowers.

Firemen Fight 2 Barn Fires Last Thursday

Two barn fires and several minor fires kept Chelsea firemen on the run last week.

The barn fires, one at the Charles W. Trinkle dairy farm, 9631 Trinkle Rd., and the other at the Russell Ferry farm, 20624 Waterloo Rd., occurred within seven hours of one another on Thursday, Aug. 5.

The fire at the Trinkle farm was discovered at approximately 4 p.m. Lost were a hay baler, a corn chopper-picker, a silage wagon, a hay wagon, 10 bushels of feed, 5,000 bushels of grain, 220 bushels of wheat and 2,000 bales of hay. No estimate of the loss was made and no injuries were reported.

According to Fire Chief James Gaken, firemen from Chelsea were at the scene for more than four hours. About 35 firemen from Chelsea and Dexter fought the blaze.

The fire at the Russell Ferry farm was reported at 10:30 p.m. A barn, a tractor-loader, a corn planter, grain, hay and two snowmobiles were totally destroyed.

The fire is under investigation by the Washtenaw County Sheriff's Department. Arson is suspected.

About 15 Chelsea firemen fought the fire for more than two hours, Chief Gaken said. There were no injuries.

Also on Thursday, Aug. 5, the Chelsea Fire Department was called to hose down a block on E. Middle St., where a quantity of gasoline had spilled on the street after the rear discharge valve on a small gasoline truck had been dislodged. While still working on the street, they were called to a grass fire along I-94 west of Fletcher Rd. The grass fire was extinguished within half an hour.

On Friday, Chelsea firemen extinguished a fire in a rabbit hutch owned by Louis Hatt, 765 Flanders Ave. The hutch, which was totally destroyed, had contained only one rabbit, and the rabbit escaped. Gaken said the fire was caused by sparks from a trash burner.

On Sunday, Aug. 8, the firefighters spent more than an hour at a grass and woods fire at Camp Tamarack, 5000 Clear Lake Rd. The fire was caused, Chief Gaken said, by a cigarette.

The Chelsea Fire Department also extinguished a grass fire along the railroad tracks on Chelsea-Dexter Rd., on Monday, Aug. 9. Some old railroad ties that had been left by the railroad were also burned, but there was no other damage.

New Rules Issued for Fair Entries

Some new rules for those participating in the tractor pulls, and other regulations concerning this year's fair have been announced by the Fair Board.

This year the starting time for the tractor pull will be 10 a.m. Friday, Aug. 27. Weigh-in times for tractors Friday, Aug. 27 are as follows:

Light tractors, 9:30 a.m.; heavy-lights, 11 a.m.; light-heavyweights, 1 p.m.; heavy-weights, 3 p.m.

The top six tractors in each class will be held over to pull Friday evening.

Rules and weigh-in times for garden tractors have not been yet told. For the first time this year a new rule will be enforced. Rule No. 21 states that drivers must stay on their tractors at all times, and no one but the driver will be allowed in the arena.

All persons under 18 participating in the tractor pull must have cards signed by their parents before their tractors will be weighed-in. The cards will be available at Farmers' Supply or from Paul Bollinger.

The fair board also announced that home economics and agricultural exhibits will be displayed in the basement of the new Fair Services Center. Hobbies, antiques and flowers will be exhibited in the Red School House.

Premiums will be available starting at 1 p.m. Wednesday, Aug. 25. All premiums must be called for by 9 p.m. Saturday, Aug. 28.

No exhibits will be accepted after 12 noon Tuesday, Aug. 24 unless the superintendent is notified in advance that they will be late.

Any exhibitor breaking any rules will not be allowed to have an exhibition in next year's fair.

Lloyd Grau Named to Appeals Board

Lloyd Grau, 502 McKinley St., was appointed to the Sylvan Township Board of Appeals by the Sylvan Township Board at their Aug. 3 meeting.

Grau replaces Emerson Leaser who died recently. His term will expire April 1, 1972.

The board also heard reports on the progress of the new Sylvan township zoning ordinance and land use plan. The plans are expected to be completed in about one month.

The next meeting of the board will be Tuesday, Sept. 7.

County Planners Oppose Zoning for Shopping Center

A recommendation against the re-zoning of 70 acres on the southeast corner of I-94-M-52 interchange for use as a shopping center was made by the Washtenaw County Planning Commission at its Aug. 4 meeting.

The recommendation seriously challenges the feasibility of developing the complex which, with a proposed shopping area of approximately 352,000 square feet, would be slightly smaller than Arborland.

A zoning change from agricultural to general business use was approved by the Sylvan Township Planning Commission June 24. However, the Sylvan Township Board must act on the change before it becomes final. Now that both the county planning commission and its staff are on record as opposed to the building of the center, it is uncertain whether or not the change will receive ultimate approval.

One of the major considerations in its recommendation against the center was the forseen lack of an adequate population to support both the shopping complex and the business districts in Chelsea, Manchester and Dexter.

According to Thomas Fegan, County Planning Director, there is "a real need for a more comprehensive market study." The county planners found that a population of 100,000 within a 10 to 12 mile radius of the center would be needed by 1975 to provide an adequate market for both the complex and the towns.

Yet, the planning commission found that there will probably be only 40,000 people within that range of the center in the next four years.

Other difficulties foreseen by the county planning staff include access to the site, and adequate sewage and drainage facilities.

Since the site does not have village water and sewage facilities, and since there is no provision for a community hook-up at the present time, the developers would have to provide both their own water and sewage disposal units.

The commission cited the hilly character of the proposed location as contributing both to drainage and access problems. Access to the site is available only from M-52 since the I-94 freeway eliminates the possibility of access from the

northern side of the property.

Fegan said, "Both the extreme topographic conditions and the proximity of I-94 present traffic problems. There would be a real need for the improvement of M-52 if the center were to be built."

Also serving as factors in the commission's recommendation against the center are the absence of an adopted land use plan and a site plan review provision for Sylvan township.

However, the Sylvan Township Planning Commission is currently preparing preliminary plans for a new township zoning ordinance and a land use plan. The preliminary study is expected to be complete in approximately one month.

Despite their strong opposition to a shopping center, the county planning commission did not rule out the possibility of developing the land for other forms of commercial use.

Options on the land involved are currently held by the LaFontaine Construction Corp.

The next meeting of the Sylvan Township Board will be held Tuesday, Sept. 7.



INSPIRED GARDENER: The Rev. Matthew Betz, a retired director and now a resident of the Chelsea Methodist Home, examines the roses growing in the home's court yard garden to which he devotes much of his time. The Rev. Betz, director of the home from 1948 until his retirement in 1957, has been active as the semi-official gardener since his return. Now 85, the Rev. Betz has shown down a bit this year, he says. "I had gardens all



Washington Report by Congressman MARVIN L. ESCH

There is an element of mystery to the 1972 elections brought about by the ratification of the 26th amendment by 38 states including Michigan. Nationally more than 11 million Americans between the ages of 18 and 20 now have a voice in choosing their elected officials.

In the state of Michigan there will be 520,000 eligible new voters. Just how many of these young voters will actually participate in the '72 elections is a subject of a great deal of speculation by the pundits and the politicians. Will they register as Republicans or Democrats; will they vote liberal or conservative?

Early registration figures indicate that more of these young people now call themselves Democrats. However I am certain that even my most partisan colleagues in the U.S. House of Representatives are hesitant to chalk up their next victory on the basis of this early trend. Early registration figures like early election night returns do not always foretell the end result.

Past voting studies indicate that probably fewer than 1/2 of these potential voters will cast a ballot in '72. I recall a December 1969 Gallup Poll that uncovered the startling fact that only 50 percent of this nation's adults under 30 were registered to vote.

But since today's young people are much more conscious and interested in the world about them than any similar generation in previous years it seems to me that political observers will have a tough assignment making predictions, or if they attempt to "type cast" them. One probably result that most persons agree on "type case" them. One probable will pay more attention to issues than to party labels and weigh carefully the positions each candidate takes.

It would be my hope that regardless of how our youth votes that each and everyone has every opportunity to cast a ballot. I would further hope that in every state of our union there will be little necessity for prodding to bring about adherence to this new federal law.

The new amendment is the fourth to expand the electorate since the Constitution was adopted and is a further demonstration of American democracy at work.

Only 20 percent of the home-maker's food dollar is spent for meat at the grocery store or Supermarket each week. An equal percentage is spent on non-food items such as tobacco, cleaners and soaps, health and beauty aids, paper products, glassware and magazines.

Uncle Lew from Lima Says:

DEAR MISTER EDITOR:

I see by the papers where this outfit in England has come up with someone they call a "Charter of Children's Rights". The piece said they was dead serious about setting down the things younguns has freedom to and from, such as freedom from "religious indoctrination" and freedom of "speech, both written and verbal."

Mister Editor, I am full agreed with the feller that said as a fel-

ler gets older he ought to worry less about life, on account there is less of it left to worry about. But when I see where grown people can serious purpose that stuff like a "Charter of Children's Rights" be made the law of the land in any land, I can't help worrying what kind of world we're passing down to our younguns.

General speaking, I think grown people are trying to get rid of their own job as ma and pa by perverting their younguns want to think and act like them. Furthermore, I am full of the mind that younguns would rather be looked after, told how to dress and what to say, instead of having "freedom from excessive claims made on them by their parents."

This matter come up from another angle Saturday night at the country store when Ed Doolittle allowed he has took this big time sports thing so serious till we got boys playing league football practical in dippers. Ed was strong of the opinion that boys ought to be left alone to be boys, and that girls ought not to be hurried in their growing up neither.

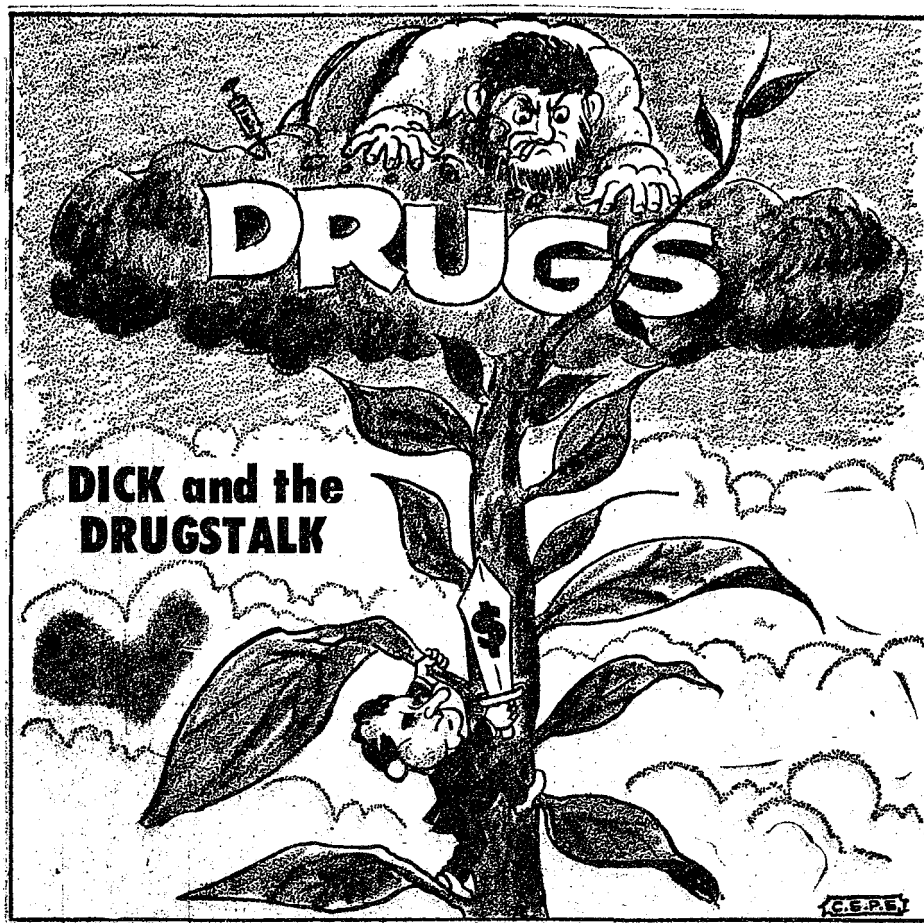
All the fellers is well into the age of Social Security, Medicare and all them aids for folks the Government calls elderly, Mister Editor. Probable, our opinions is bent some with the weight of our years, but we was full agreed that this country is getting the wrong idee on freedom.

Per instant, we give our younguns so much when they're little that when they git up some size they keep thinking they're free to do and git everything they want. I was glad to see the court ruled that girl that wouldn't mind her va couldn't collect support from him, but it's sad such a thing can git to court. I was glad to see the court rule agin the drunk driver that said he was too drunk to be able to decide if he ought to take the police breath test to tell how drunk he was, but I worry cause we ain't got no sure way to keep drunks from killing folks on the roads.

Actual, Mister Editor, they is a lot the fellers ain't worried about. Fer instant, Clem Webster said he had saw where scientists was sending out signals to other planets that would take 50 year to git there and, if somebody or someun answers, another 50 year to git back. Clem said he ain't setting up nights waiting on that one.

I see the average age in this country dropped from 29 to 27 in the past 10 year. Let them worry, I ain't gitting no younger.

Yours truly,
Uncle Lew.



★ MICHIGAN MIRROR ★

By Elmer E. White, Secretary, Michigan Press Association

"Flouridation Helps"

More proof of benefits from flouridation of drinking water was apparent in a new study released by the Michigan Department of Public Health.

The statistics come from a study of all public school children aged 10 through 12 in four Michigan cities: Flint, Jackson, Battle Creek and Kalamazoo.

Flint began flouridating its water in 1966, and a study conducted there in 1970 showed children had 30 percent fewer cavities than did children in the same age bracket in 1966 before flouridation began. In addition, the 1970 study group showed 22 percent fewer missing permanent teeth.

Dr. Louis F. Szwejdja, research and special projects chief of the department's dental division, conducted the analysis. He says that while the benefits of flouridation are clear in Flint, "the Flint story is modest compared to what has happened in the other three cities."

Battle Creek, Kalamazoo and Jackson began flouridating water 20 years ago in 1951. Children in those cities show a dramatic 52 percent to 67 percent reduction in decayed, missing and filled permanent teeth.

As a matter of fact, more than 40 percent of the children examined in the three cities showed no decayed, missing or filled teeth at all.

Szwejdja says the benefits of flouridation "are really no surprise, of course. They simply confirm the overwhelming evidence of other studies, including the study in Grand Rapids, the first city in the world to begin water flouridation."

There are other statistics for parents on what they are saving in the four cities on dental bills as a result of the flouridation.

"For Jackson," he says, "without flouridation parents would have had to pay for nearly 7,000 more decayed teeth in the 10 to 12 age bracket and just under 13,000 surfaces—at a minimum estimated cost of about \$64,000."

In Battle Creek, over 5,300 teeth have been protected from decay, and almost 10,000 surfaces—amounting to a minimum saving of slightly under \$50,000.

"Water flouridation in Kalamazoo has meant a saving to parents of more than \$79,000 in dental expense, from the extra protection of over 8,500 teeth and almost 16,000 surfaces."

And in Flint, after only 4 1/2 years, "the study shows parents have saved more than \$118,000 in reduced dental bills so far, for the age 10 through 12 year old children."

"Facilities Used" Roadside facilities maintained by the State Highway Department were used a total of 25 million times last year, almost three times for every resident of the state.

MONEY TROUBLE?
ONE PLACE TO PAY!
Credit Management Service
662-2565
215 South Fifth Ave.
Ann Arbor
State Licensed and Bonded

Entries Sought for Annual Parade On Veterans Day

Washtenaw county's Veterans Affairs Office has extended an invitation to area organizations and groups to participate in the 6th annual Veterans Day Parade slated for Oct. 25.

Carl A. Herdt, director, tells us that any type of float or marching unit is welcome to participate. Full information and instructions may be obtained by writing to his office: Veterans Affairs, 4133 Washtenaw Ave., Ann Arbor, 48104.

The parade will begin at 6 p.m. the evening of Oct. 25, a Monday (under the new Monday holiday act) and proceed from the intersection of Hill and Division down Division, Packard, Main, Washington and State to Hoover.

Family Back-Yard Movies Encouraged with County Library Films

Lawrence B. Davenport, director of the Washtenaw County Library, has announced that the Board of Commissioners has officially proclaimed the week of Aug. 15 as "Family Back-Yard Movie Week."

The proposal, originated by Commissioner William E. M. Lands, is to encourage use of the films and projectors available through the Washtenaw County Library.

The Library, located at 4133 Washtenaw Ave., has both 8-mm and 16-mm films and projectors available—at no charge—to any individual or group within the county. 8-mm films include early silents, Chaplin, Laurel and Hardy, W. C. Fields, etc. The 16-mm films are mainly instructional and travel.

For further information please call the Library at 971-6057.

IF YOUR ROOF IS HURTIN' Call Burton!

- ★ Old and New Roofs
- ★ Hot Tar and Metal Roofs
- ★ Aluminum Siding
- ★ Aluminum Awning and Storm Doors and Windows
- ★ Seamless Aluminum Eaves Troughs and Down Spouts
- ★ Mobile Home or Trailer Skirting

COOPERATIVE ROOFING & SIDING CO.
Call 662-5900 or 662-3288
Evenings Call Burton Rathburn, 663-0754

JUST REMINISCING

Items Taken from the Files of The Chelsea Standard

4 Years Ago . . .

Thursday Aug. 4 1967—

It's almost fair time! The Cherokee Riders, a Pinekey 4-H group which dresses in Cherokee costume and war paint, will be an added attraction at the Fair Parade on Saturday, Sept. 2. The group consists of 26 horses and riders.

Saturday is "Queen's Day." At 7 p.m. contestants in the queen competition will be presented. Roxane Shears, 1966 Fair Queen will crown this year's winner. Contestants include: Linda Van Riper, daughter of Mr. and Mrs. William Van Riper; Kathy Powers, daughter of Mr. and Mrs. Robert H. Powers; May Fish, daughter of Mr. and Mrs. Lewis Fish; Ann Thomson, daughter of Mr. and Mrs. John Thomson; Diane Stoffer, daughter of Mr. and Mrs. John Stoffer.

Joan Dietle, daughter of Mr. and Mrs. Lawrence Dietle; Ronda Kern, daughter of Mr. and Mrs. Richard J. Kern; Holly Powers, daughter of Mr. and Mrs. H. Charles Powers; and Jeanne Hinderer, daughter of Mr. and Mrs. H. Charles Powers; Mr. and Mrs. Loren Kinderer are other queen contestants.

St. Paul UCC softball team won the Chelsea Recreation championship for 1967 by a one and one-half game margin over the Chelsea Lanes team. Their record for the season was 10 wins and four losses. Leading hitter for the team was Denny Stoffer with a .578 batting average. Following closely were Alton Nixon, Tim Whitesall, Homer Nixon and Pete Flintoff.

14 Years Ago . . .

Thursday, Aug. 22, 1957—

Area 4-Hers were winners at the Washtenaw County 4-H Show held last week at the new Farm Center on Saline-Ann Arbor Rd. Among those from the Chelsea area who received high awards are: Robert Weiss, son of Mr. and Mrs. Lee Weiss, who won first place in the pleasure class in the horse division, and who, for the second year in a row, won the Herbert Steffens Memorial Award for the best all-around in the class. David Wolfgang won the grand championship on the Jersey class. Earl Heller won the sheep showmanship contest.

Members of the Chelsea FFA are off on a tour of New York farms this week. Jack Williams, Tim Schulze, Melvin Seitz, Johnny Klink, Richard Irwin, Bill Kuhl, David Rowe, and Fred Patterson, accompanied by FFA advisor Philip Smith, went on the tour, which will conclude with two days of recreation in Adirondacks State Park.

The Alfred Kuhls met a new "addition" to their family last Friday, Elena, Romero, an exchange student

from Honduras, will be living with them during the school year. Mr. and Mrs. Kuhl and their daughter, Kay, met their guest at Willow Run Airport at 11 p.m. Friday.

Erwin Haist was elected president of the Black-Top Delaine Sheep Breeders Association at a meeting held Sunday at the Haist home. Alfred Lindauer was named host for the 1958 annual meeting.

Contracts for the construction of Chelsea's new high school were awarded this week. North Construction Co. of Jackson was named the general contractor, and Turner Electric of Chelsea received the contract for electrical work. Completion of the school is scheduled for Aug. 15, 1958.

24 Years Ago . . .

Thursday, Aug. 21, 1947—

School electors in 12 rural districts and the Chelsea district will have an opportunity to decide the question of reorganization into one school district next Thursday, Aug. 28. If the reorganization measure is passed, the 12 rural districts and the Chelsea district will be merged into one rural agricultural school district.

Coaches Charles Cameron and Douglass Newkirk will be on hand to greet football candidates at their first practice session scheduled for Tuesday, Sept. 2. Cameron is starting his 13th year as head coach. During this time his teams have seldom failed to finish in the first division of the Huron League. The first day of practice will be spent issuing equipment and beginning calisthenics.

Twenty-two members of the Chelsea FFA have just returned from a week at the Perry Sound Rotary Club Camp in Ontario. FFA members making the trip were Richard Carlson, James Weber, Paul Bollinger, Robert Schneider, Alton Grau, Ralph Guenther, Roy

Guenther, J. Neil Lantis, Walt Tarnacki, Keith Bradbury, Richard Kalmbach, Bill Lyons, Paul Kalmbach, Bob Robbins, Willis Schulz, Walt Zeeb, Ralph Erke, Robert Bauer and Oscar Hansen. Advisers were Marshall Richards, Albert Johnson, and Robert Walz. On the return trip the car driven by Paul Bollinger broke down, causing the group in the car to be stranded in Canada. The incident was not discovered by the other drivers, all of whom had been behind Bollinger on the road. So they proceeded to Chelsea under the assumption that all the cars had returned to Chelsea without difficulty. The boys who had been passengers in the Bollinger car, Walt Zeeb, Robert Bauer, Willis Schulz, and Elton Grau, had quite a time getting to Detroit, but made the trip from there to Chelsea without further incident.

34 Years Ago . . .

Thursday, Aug. 19, 1937—

Sprinkling of oil on Chelsea streets was started this week and if weather conditions are favorable all streets in the village will be dustless within the next two weeks, according to those in charge of the operation. Two carloads of oil (approximately 16,000 gallons) have been received and another carload will arrive within a day or two.

The resignation of Ed Miller as village treasurer was accepted at the regular meeting of the village council. The resignation was made necessary because of Miller's appointment as chairman and mail messenger at the new post office. Mrs. Ed Miller was appointed to the position of village treasurer by president Roy Harris, and the appointment was confirmed by the council.

The completion date for the sewage disposal plant being built in Chelsea was set back from Sept. 1, 1937 to Dec. 1, 1937, by the village council Monday night. Inclement weather and a labor shortage have slowed progress on the plant. On Thursday, Aug. 19, eggs were selling for 25 cents a dozen.

Good Glasses Are Priceless!

Available at

WINANS OPTICAL

PHONE 475-1233

114 N. Main (in Sylvan Hotel) Chelsea, Mich.

REGULAR & SUN GLASSES
PRESCRIPTIONS FILLED

DAVID WINANS, Optician
(Formerly with Johnston Optical)

CONSIDER YOUR FUTURE . . . and then

Consider Washtenaw Community College
We Train The Best

The Best:

- Data Processing Technicians
- Management Technicians
- X-ray Technicians
- Dental Assistants
- Accounting Technicians
- Inhalation Therapists
- Architectural Draftsmen
- Electronics Technicians
- Numerical Control Technicians
- Metallurgical Technicians
- Educational Assistants
- Public Administration Technicians
- Mechanical-Engineering Technicians
- College-Transfer Students

The Best:

- Food Service Technicians
- Library Assistants
- Medical Office Specialists
- Technical-Commercial Artists
- Automobile Mechanics
- Industrial Draftsmen
- Electro-Mechanical Technicians
- Fluid Power Technicians
- Sales Technicians
- Toolroom Machine Operators
- Welders
- Secretaries
- Publications Technicians
- Quality Control Technicians

CHOOSE YOUR PROGRAM AND REGISTER NOW for the fall term

Continuous Registration through August 31, 1971

Registrar's Office, Exact Science Building, 4800 Huron River Drive
Hours: 8:30-11:30 a.m., 1:30-4:00 p.m.

FOR FURTHER INFORMATION:
Call 971-6300, Ext. 421-422

or
Mail this ad, indicating programs of interest. Please include your name and address.

To: Washtenaw Community College
P. O. Box 345, Dept. X
Ann Arbor, Michigan 48107

Name _____
Address _____

Established 1871 **The Chelsea Standard** Telephone GR 5-3581
Excellence Award By Michigan Press Association
1951-1952-1960-1964-1965-1966
Walter P. Leonard, Editor and Publisher

Published every Thursday morning at 800 North Main Street, Chelsea, Mich. 48118, and second class postage paid at Chelsea, Mich., under the Act of March 3, 1879.

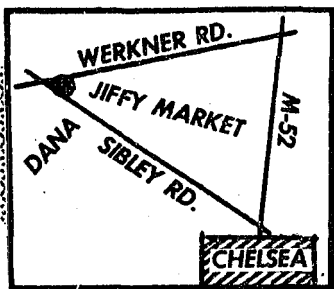
ADDRESS CORRECTION REQUESTED

Subscription Rates (Payable in Advance)

In Michigan:		Outside Michigan:	
One Year	\$4.00	One Year	\$6.00
Six Months	\$2.25	Six Months	\$3.50
Single Copies	\$.15	Single Copies	\$.20

Service men or women, anywhere, 1 year \$4.00

MEMBER **NATIONAL PAPER ASSOCIATION** Founded 1888
National Advertising Representatives: MICHIGAN NEWSPAPERS, INC., 957 Michigan Ave., East Lansing, Mich. 48825



HOURS:
7 AM - 10 PM
OPEN 7 DAYS A WEEK!
PHONE 475-5701

Jiffy market

**COMPLETE
SUPER
MARKET**

BIG ENOUGH TO SERVE YOU.....SMALL ENOUGH TO KNOW YOU!

Corner of SIBLEY & WERKNER RDS....CHELSEA, MICHIGAN

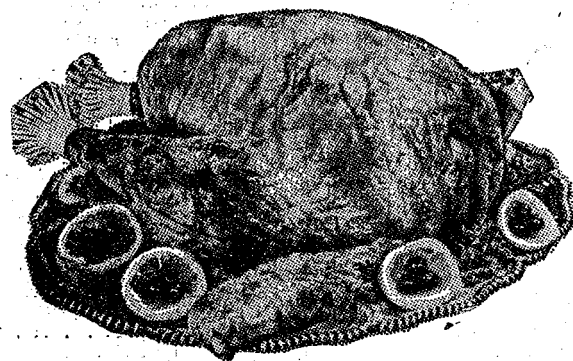
All Prices Effective Thursday, Aug. 12, 1971, through Sunday, Aug. 15, 1971.

NORBEST U. S. GRADE A
TENDER TIMED YOUNG

HEN TURKEYS

14- to 16-Lb.
Average

39¢ lb.



U. S. D. A. CHOICE

TENDER, DELICIOUS

CHUCK STEAKS

69¢ lb.

AGAR

CANNED HAM

5-lb. can \$3.99

Available Friday, Saturday and Sunday
Sliced at No Charge.
A Popular Favorite!

**BACON-LETTUCE-TOMATO
SANDWICH**

RE-PEETER BACON . . . lb. 59¢
Home-Grown TOMATOES, lb. 25¢
Home-Grown LETTUCE, head 19¢

A Real Summer Treat!

FARMER PEET'S
LUNCH MEAT
HAM - BEEF - CORNED BEEF

3 3-Oz. Pkgs. **\$1.00**

Sliced - Smoked - Chopped
Pressed - Cooked.
Ideal for cream on toast.

**SMOKED
PICNICS**

4- to 8-Lb.
Average **43¢ lb.**

Sliced Free!

**FOR YOUR
FREEZER
CHOICE
SIDES
QUARTERS**

FARMER PEET'S
RING BOLOGNA
59¢ lb.
PICKLE BOLOGNA
at the Deli-Case
99¢ lb.

12 ASSORTED
TWIN POPS
IN BOX

Only 49¢



**ELsie
TWIN POPS**
12 in
Box **49¢**

MR. MINI'S FAMOUS 8-OZ.
SUBMARINE SANDWICH

Now Available
in our New
Deli Case

Only 99¢

People
Love
It!

JIFFY MARKET DELI CASE

SPECIAL!

**POTATO
SALAD**

39¢ lb.

**MACARONI
SALAD**

A Large Assortment of
BULK CHEESES - SALAMIS - SALADS

CANNING SUPPLIES

JARS - CAPS - LIDS - DILL - SPICES - GARLIC
FREEZER BOXES - FREEZER BAGS - PARAFFIN WAX
PLASTIC CONTAINERS WITH LIDS - PINTS OR QUARTS
CERTO - SURE JELL - ASCORBIC ACID
GALLON VINEGAR - KOSHER SALT

CIGARETTES Your Choice **\$3.29**
PLUS RACING JACKET OFFER

**SALUTO FROZEN
PARTY PIZZA**

With Sausage - Mushrooms - Peppers

Large 2 Lbs., 1 Oz. **Reg. Price, \$2.29**

**SPECIAL
RED HOT PRICE \$1.69**

**FRESH BAKED
MERCHANDISE**

Pies - Cakes - Rolls - Cookies -

Bread - Cup Cakes - Donuts - Others

Rollin Pin Bakery of Jackson is doing our baking. We have a refrigerated pie case and 3 large bakery display cases. Come in, look us over — tell us what you want. Help us get this going.

**KLEEN-MAID
BREAD**

REPEAT SALE!

Sorry we ran out of bread last week — 6 days out of 7. It seems that Way Baking Co. of Jackson is long on promises of what they can do, but short on performance. This includes their driver-route manager, sales manager and plant manager.

Large
1 1/4-Lb.
Loaf

18

**Baked
By
Way
Baking
Co.**

**COLD BEER & POP
AVAILABLE AT ALL TIMES!**

Visit our new huge walk-in beer cooler. A complete assortment of all brands at prices you have to see to believe.

Shop Our Displays and Coolers for Deals!

SHEERLIFE NYLONS . . . Pkg. of 3 Only **79¢**

OLD FASHIONED, REVERSIBLE

THROW RUGS . . . 19" x 33" Each **89¢**

BLACK FLAG ANT TRAPS 3 for 39¢

KLEAN SWEEP BROOMS 98¢

Ajax Laundry Detergent Huge 5-Lb., 4-Oz. Box **\$1.19**

DR. LANE ASPIRIN . . . 250-Count Bottle **25¢**

HILLBILLIES HAPPINESS

R. C. COLA . . . 8 10-Oz. One-Way Bottles **79¢**

MICHIGAN SOUR CREAM Pint **39¢**

RISDON YOGURT . . . Assorted Flavors 8-Oz. Crtn. **19¢**

SUN DEE VITAMIN D

Leading medical and scientific opinion heartily endorses the addition of 400 units of Vitamin D to milk. Two important purposes of Vitamin D milk are to help prevent rickets and promote the development of sound teeth and bones by providing an adequate amount of Vitamin D which is necessary for the proper utilization of the calcium and phosphorus contained in milk.

MILK

1/2 GALLON GALLON

45¢ 85¢

Try Some Today!

**2 CYCO
POWER FUEL**

Works wonders for your outdoors, power mowers, chain saws, go-karts.

49.9¢ gal.

MARATHON GAS PUMPS

REGULAR

31.9

Includes All Taxes

NOTE: Our Gas Prices
INCLUDE ALL TAXES

TOP QUALITY GAS!

PREMIUM

35.9

Includes All Taxes

A NOTE OF CAUTION . . .

We are selling you gas at wholesale prices. This will save you up to \$1.60 or more per tank full. However, it still takes money to pay our operating cost. Our grocery store is now one of the finest stores you can find—Quality merchandise, supermarket prices, and a variety of merchandise that you have to see to believe. Take advantage of our low cost gas, but help us hold this low price by supporting our store. Regardless if it's only one item or many, it all helps.

—Gene.

Open 7 Days A Week, 7 a.m. to 10 p.m. — Daily & Sunday Newspapers Available

**Ads
Taken
Till 5 p.m.
Tuesday**

**IT'S EASY TO
BUY-SELL-RENT-
HIRE & FIND WITH**

WANT ADS

**Just
Call
GR 5-3581**

WANT ADS

The Chelsea Standard

WANT AD RATES

PAID IN ADVANCE—All regular advertisements, 50 cents for 25 words or less, each insertion. Count each figure as a word. For more than 25 words add 2 cents per word for each insertion. "Blind" ads or box number ads, 35c extra per insertion.

CHARGE RATES—Same as cash in advance, with 15 cents bookkeeping charge if not paid before 5 p.m. Tuesday preceding publication. Pay in advance, send cash or stamps and save 10 cents.

DISPLAY WANT ADS—Rate \$1.10 per column inch, single column, width only. 8-point and 14-point. Right type only. No borders or boldface type. Minimum 1 inch.

CARDS OF THANKS or MEMORIALS—Single paragraph style, \$1.00 per insertion for 50 words or less; 2 cents per word beyond 50 words.

COPY DEADLINE—6 p.m. Tuesday week of publication.

REMOVE carpet paths and spots; fluff beaten down nap with Blue Laetse. Rent shampooer \$1. Dancer's.

USED CARS

'70 Cougar, factory air
'70 Cobra 2-dr. hardtop
'70 Thunderbird, with air
'69 LTD 4-dr. with air
'69 Chev Impala
'67 Mercury 2-dr. hardtop
'67 VW
'67 Mustang
'66 Mustang
'65 Ford LTD 2-dr. hardtop
'64 Falcon 4-dr.
'60 Falcon 4-dr.

TRUCKS

'67 Ford ¾ ton
'67 International ½ ton pick-up.
'65 Ford ¾ ton
'61 Ford ¾ ton

**See Us About
Demonstrators
and Driver
Education Cars**

PALMER FORD

Open Mon., Wed., Thurs., Till 9:00
Chelsea GR 5-3271

All Insurance Needs

In the convenience of your own home — or mine

N. H. Miles, Allstate

Call GR 5-8334 after 6 p.m.

THE BEAUTIFUL BRUTES are here! Alouette snowmobiles. Come see them at Han-Co Winter Sports, at 15901 Seymour Rd., or call 475-7212.

Real Estate For Sale

2-BEDROOM RANCH type home on 5 acres, with pond. On black-top road.

Call

Kern Real Estate

Phone 475-8583

WANT ADS

BOARDING, trimming, training. Town and Country Kennels, Jackson Rd. at Baker. NO 3-7200.

Gem Travel Trailers and Campers

PICK UP COVERS

4" ————— \$100.00
26" ————— \$179.00 and up

Triangle Sales

Chelsea 475-4502

CLOGGED SEWER

Reynolds Sewer Service

We Clean Sewers Without Digging
Drains Cleaned Electrically
FREE ESTIMATES
2-YEAR GUARANTEE
Phone Ann Arbor NO 2-5277
"Sewer Cleaning Is Our Business—
Not a Side Line"

KNAPP SHOES

For Cushion Comfort

Robert Robbins

475-7282

WANTED!!

Antiques and curiosities of all kinds for large auctions.

Will buy one piece or entire collections, if price is fair.

Dealers, too.

JOHN WEBER

426-3734, Dexter, Mich.
All calls confidential.

REGISTERED Quarterhorses—Two year old mare. Half-broke for saddle. 426-2418.

LOST—In downtown Chelsea, klp on prescription sunglasses. Call Mrs. Packard at 475-8005.

BABYSITTING—For one pre-schooler this fall in my home. Call 475-2772.

ALCOA SIDING with Remodeling—Since 1938. Prompt service, professional workmanship. William Davis Contractor. Ann Arbor, Mich. Estimat. no obligation. Phone (313) 663-6635. Completed work near you.

Hearthside Yarn Shop

5450 Conway Road

Yarns, needles, accessories
Free instructions in knitting and crocheting with follow-up assistance.

Ph. 475-2014

FORMAL WEAR

RENTAL SERVICE

Proms - Weddings - Special Events
6 different colors.

Foster's Men's Wear

-8tf

WANT ADS

ROBERT PATRICK for home improvement, building and maintenance. Ph. 475-7460.

HAMMOND ORGAN teachers wanted to teach in their own homes. Call Grinnell Brothers, Ann Arbor, 662-6667.

CALL FRANK for all your carpet cleaning jobs, morning or weekend. Needs only 3 hours to dry. Only 10c per square foot. Phone now for free estimate, 761-4823. All work guaranteed.

PIANO TUNING, Chelsea and area. Facilities for reconditioning and rebuilding. Used piano sales; reconditioned grands and verticals. E. Eklund. 426-4429.

Contractor Servicing Chelsea, Dexter and Manchester Areas

Complete Home Remodeling
Inside and Outside

Specializing in extra living space, recreation rooms, kitchens and paneling. Installing all aluminum products, 5" eavestroughs, custom-made awnings, windows and doors, aluminum siding in many selected colors and styles.

Please Call

DALE COOK

Chelsea 475-8863

CHELSEA

School District

Five Beautiful Country Sites

in Noah Heights Adjacent to Half Moon Lake State Park

Model Open 2-6 Sat. and Sun.

Any time by appointment

Featuring

—Carpeting throughout

—2-car garage

—Full basement

—Hotpoint stove and refrigerator

—All aluminum exterior

—Concrete porches, sidewalk, gravel drive

—Storms and screens

COME OUT AND TALK TO US ABOUT OUR WIDE VARIETY OF HOME PLANS.

We know you will be pleased.

W. C. Weber

Construction Co., Inc.

12290 Jackson Rd., Chelsea, Mich.
475-2828 663-1935 475-4977

CHELSEA'S PREMIER BUILDER

-8tf

REAL ESTATE

SIX ACRES, wooded, like northern Michigan. Three bedrooms, with redwood siding, Dexter schools, 14 miles to Ann Arbor, land contract available.

WATER-FRONT home at Island Lake. Year around.

3-BEDROOM home at Portage Lake on 2 lots. Dexter schools.

22 VACANT ACRES—High, rolling hill, good building site, on Dexter Trail.

WHY RENT? You can own ¾ acre zoned for mobile home.

Howell

Town & Country, Inc.

Ph. Howell 878-3177

Your Local Representative

CARLIE WIEDMAN

Phone 426-3758

ELECTROLUX

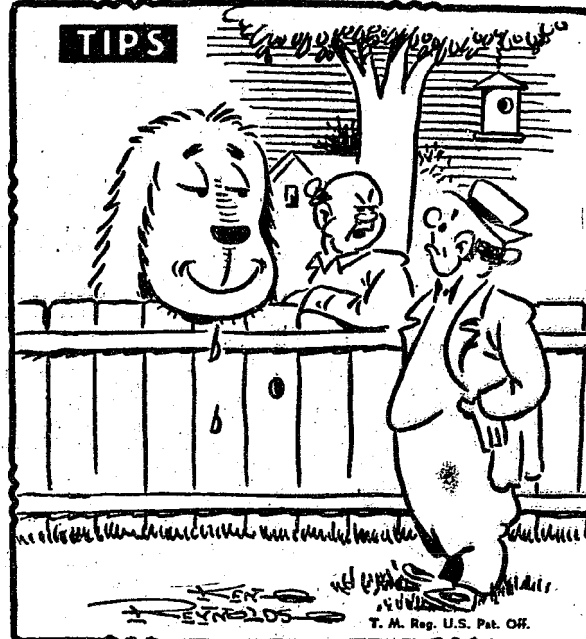
VACUUM CLEANERS

SALES and SERVICE

JAMES COX

Ph. 428-2931 or 428-8221

Manchester



"I had to sell our TV with a Standard Want Ad - too many dog food commercials!"

WANT ADS

WORK SHOE HEADQUARTERS

Famous Red Wing Brand

\$12.95 to \$26.95

Foster's Men's Wear

-8tf

REAL ESTATE

SYLVAN TOWNSHIP—Well located 64 acres excellent, level land.

5-ACRE BUILDING LOT.
10-ACRE PARCEL. Grass Lake schools, \$600 per acre.

R. D. Miller

REAL ESTATE

Real Estate Broker

475-7311

15775 Cavanaugh Lake Rd.
Chelsea, Mich.

-6tf

NEW CAR YEAR-END SALE

"BUICKS"

1971 Electra 225 4-dr. hardtop.
Sticker price, \$5781.80. Sale price, \$4833.62

1971 Electra 225 2-dr. hardtop.
Sticker price, \$5779.36. Sale price, \$4831.64

1971 LeSabre 4-dr. sedan custom.
Sticker price, \$4873.00. Sale price, \$4123.88

"OLDSMOBILES"

1971 98 4-dr. hardtop (demo).
Sticker price, \$5956.69. Sale price, \$4974.06

1971 Cutlass Supreme convertible.
(No air). Sticker price, \$4251.13. Sale price, \$3729.11

1971 Cutlass 2-dr. hardtop (no air).
Sticker price, \$3719.78. Sale price, \$3294.84

Most of these cars have vinyl tops, power steering, and power brakes.

SPRAGUE

Buick-Olds-Opel, Inc.

1500 S. Main St., Chelsea
Phone 475-8664

2-CYCO FUEL

For All 2-Cycle Engines

WHITE GAS

Available at

Gateway

Sports Centre, Inc.

-4tf

Time for a Change...

... from old, worn down tires to SAFE new ones! Come in today!

Your tires have been taking a real beating... How much longer can they stand up? Better to be safe than sorry! Trade them in on a new set.

PURE OIL PRODUCTS

JIM'S PURE SERVICE

Tires — Batteries — Tune-Ups — Brake Service — Wheel Alignment

PHONE 475-2822

501 SOUTH MAIN

WANT ADS

EXPERIENCED CHILD CARE in my home, any time. Ph. 426-4192.

PIANO TUNING at savings! New man in area offering introductory rates to build clientele. 769-0130.

Custom Kitchen Cabinets

and

Formica Tops

Made to Order

475-2857

FURNISHED APARTMENT for rent, 1 bedroom, Dexter area. Available mid-July. Ph. 426-3961.

-8tf

COUNTRY LIVING

5 ACRES modern 5-bedroom Cape Cod. Quality construction, plaster walls, central air conditioning, 2 1/2-car garage, automatic garage opener, dining room, family room, fireplace, small horse barn. Priced to sell.

10 ACRES—Original Southern Colonial farm home. Wrought iron balcony, 3 fireplaces, 4 bedrooms and study, large country kitchen with fireplace and bar-b-q, large barn, riding corral, 30 minutes from Ann Arbor. This home has been completely reconditioned. Priced to sell at \$62,000.

13.8 ACRES—Large Early American farm home, 5 bedrooms, fireplace, new barn, picturesque view of West Lake.

20 ACRES—New 3-bedroom home. Wooded setting, 30 minutes from Ann Arbor. Priced to sell at \$45,000.

1 ACRE—3-bedroom, family room attached garage, blacktop road. Priced to sell at \$33,900.

LAKE LIVING

4-BEDROOM on the water at Sugar Loaf Lake. Family room, pool table room. Second kitchen on lower level. Excellent condition, 2 1/2-car garage. Excellent beach.

LAKE-FRONT, 2 1/2-car garage, 4 bedrooms, study, utility room, beautiful beach, located on Sugar Loaf Lake.

CAVANAUGH LAKE-FRONT home, 2-bedroom year-round. Full basement, priced to sell at \$21,900.

MODERN 3-BEDROOM ranch home, dining area, utility room, 2 full baths, 2 1/2-car attached heated garage. Access to Joslin Lake.

Chelsea-Manchester Area

4-BEDROOM—2 full baths, close to elementary school, fenced-in yard, pear trees, apple trees and peach trees. Priced to sell at \$27,000.

3-BEDROOM—California Ranch with Michigan indoor swimming pool, for year-round use. 2 fireplaces, 2 1/2 baths. Excellent location in Chelsea.

LARGE 3-BEDROOM 2-story home in Manchester, finished recreation room, dining room, large living room. This home is in excellent condition and priced to sell at \$32,000.

3-BEDROOM HOME in Manchester. Large lot, 99 ft. by 140 feet, dining room, nicely landscaped, newly decorated, new furnace. Priced to sell at \$23,500.

Frisinger Realty Co.

Chelsea 475-8881

George Frisinger, 475-2903

Paul Frisinger, 475-2621

Herman Koenig, 475-2613

Hope Bushnell, 475-7180

Serving

Ann Arbor

Chelsea

Dexter

Manchester

Member of Multiple Listing Service

FREE—1 square dance lesson. Sept. 19, Stockbridge Town Hall 7:30-9:30 p.m. Following lessons \$1.60 per couple. Sponsored by Stockbridge squares.

BOWLING SHIRTS

1-week delivery on early orders.

Strieter's Men's Wear

WARD SALE—Lawn mowers, clothing, household items, ducks, geese, rabbits and chickens. Thursday through Sunday, Aug. 12-15, 9 a.m. to 6 p.m. every day 17935 Old US-12, Chelsea, Sylvan Center, 475-9016

WANT ADS

XEROX COPIES made. Merkel Brothers. 41tf

PATCHING and PLASTERING. Call 475-7489. 38tf

FOR REAL DOLLAR SAVINGS be sure and see us before you buy any new or used car. Palmer Motor Sales, Inc. Your Ford Dealer for over 50 years. 2tf

Real Estate For Sale

BRAND NEW—3-bedroom brick, picture window overlooks golf course, 2 ceramic baths, 2 fireplaces, large (unfinished) room, 2-car attached garage. \$48,500. Financing available.

7 1/2 ACRES—All inside village limits. Has 8-bedroom house, garage, 745 feet of railroad frontage. \$30,000. Terms.

CLARENCE WOOD

BROKER

Efficient PERSONAL Service

646 Flanders St.

Phone 475-2033 or 475-8217

-8tf

FOR SALE—GE electric dryer in good condition. Norge washer, needs repair. Both for \$50. Call 426-8898.

USED CARS

1970 LeSabre 2-dr. hardtop (air cond.) \$8095

1970 Olds 442 2-dr. hardtop, vinyl top (real sharp) \$2895

1970 Ford LTD 2-dr. hardtop \$2695

1969 Chev Nova 2-dr. 6-cyl., auto. trans. \$1695

1968 Olds Lux Sedan (air cond.) \$2395

1968 Olds 98 sedan \$1895

1967 Buick LeSabre 4-dr. hardtop. \$1495

1967 Mustang, vinyl top \$1295

1967 Cutlass 4-dr. sedan \$1295

1966 Buick Riviera 2-dr. \$1395

WANT ADS

SEE US for transit mixed concrete. Klumpy Bros. Gravel Co. Phone Chelsea 475-2530, 4920 Loveland Rd., Grass Lake, Mich. x40tf

TRAVEL TRAILERS — 13-ft. and up; 10x55 ft. trailers. John R. Jones Trailer Sales, Gregory, Mich. Phone 498-2655. x43tf

HOUSE FOR SALE

Living quarters upstairs—kitchen, 8 large rooms, bath, hall closet, walk-in attic off kitchen, refrigerator, stove. Private entrance. Ground floor—6 rooms, bath, large glassed-in front porch, refrigerator, stove, carpeting, basement, 3-car garage, garden space, large back yard. 1 1/2 lots. Can rent both upstairs and down. Shown by appointment only. Location, 146 Park St. Call 475-8502 or 475-2039. x49tf

FOR RENT—New first-floor apartment, fully furnished, on Waterloo Mill Pond. Garage space. No pets or children. Teachers preferred. References. Call 475-3604. x8

TWO SCHWINN BICYCLES — Boys 24-inch, \$20; boys 2-speed 26-inch, \$25. 1965 Honda S-90. Call 475-3273. x8

L.A. Flea Market opening Aug. 1, at 7861 Ann Arbor Rd., Jackson, Mich. 1-94 to Sargent Rd. exit, then 2 miles East on Ann Arbor Rd. Dealer space available at \$2.50 per day. (517) 764-2865. Ask for Liz. x8

WANT ADS

FOR SALE — Deca electric guitar, used one month. Also, size 9E football shoes, only used once. Phone 663-8228. x46tf

WANTED

TYPIST

Accurate, 55-60 wpm.
Apply in Person

Chelsea Standard

300 N. Main St. Ph. GR 5-3581

CAR RENTAL by the day, week-end, week or month. Full insurance coverage, low rates. Call Lyle Christwell at Palmer Motor Sales, GR 5-3271. x25tf

CAR & TRUCK LEASING. For details see Lyle Christwell at Palmer Motor Sales, GR 5-3271. x49tf

AKC GERMAN SHEPHERD puppies. A fine litter. Phone (517) 596-2330. x8

MOTHERS! Here's a job you can handle. Have a debt-free Christmas plus earn \$1,000 or more from August to December. Adorable toys, 80 percent off \$3 and under. No gimmicks, collecting, or delivering. No cash investment. Free supplies. For information without obligation call collect: 423-2044, (517) 468-3477, or (517) 371-2948. x15

WANT ADS

GUITAR INSTRUCTION. Classical, folk, pop. Emphasis on theory. Only \$3.50 for 1/2 hour. Phone 475-1129. x47tf

EXPERIENCED CHILD CARE in my home, any time. Phone 761-8701 after 6 p.m. x56tf

1970 CHEVROLET Impala 4-door hardtop for sale. Loaded, must sell. A-1 condition. Also 20-foot raft, 2 years old, has 40 hp motor, canopy, curtains, trailer. Call 475-6468. x8

Builder's Own Home

1,800 sq. feet. Country living on a pine-covered acre, convenient to recreation area. Built for comfortable living. Vertical aluminum siding and vinyl trim. 2-car garage and breezeway, mud and utility rooms, 1 1/2 baths, large kitchen, dining area, custom cupboards and bookshelves. Round fireplace and beamed ceiling in a large living room. Two bedrooms and study, could be three bedrooms. The full basement is insulated with styrofoam. This all-electric gold medal home must be seen to be appreciated.

Lake Cottage

In private association. This secluded 2-bedroom cottage on a wooded lot has a 1 1/2-car attached garage for storage and convenience. Kitchen has built-in cupboards, electric range and oven. Large living-dining area has that rustic look. It is paneled in genuine you have a perfect hide-away. barn siding. Add to this a large picture window and a fireplace and Terms can be arranged.

Building Site

2 1/2 acres on Waterloo Rd.

For More Information
Call

JIM WILLIAMS

475-8320

Representing

Metty Real Estate

144 Ecorse Rd., Ypsilanti

484-1000

List your home, farm, cottage, or building site now for the fall buying season.

CALL 475-8320

A Multi-List Service x9

BLUEBERRIES

READY

You Pick

From Dexter take Dexter-Pinckney Rd. west to Island Lake Rd., then to Dancer, left on Dancer 1 1/2 miles to Beach Rd., go 1/4 mile on Beach to 10804 Beach. 3/4 mile east of Four Mile Lake, 3 1/2 miles from Dexter. x8

FOR SALE — 11' Week-N-Deer travel trailer. Sleeps two adults and two children. Dinette, icebox, sink and closet. 1958 Volkswagen, in good running condition, \$250. Phone 475-8228. x8

FOR SALE — 10-year-old pinto gelding, well trained. Call 475-2684. x8

SUFFOLK yearling ram and large Warwick sired ram. Lambs for sale. Call 475-8790. x8

FOR SALE — Two pairs of football shoes, sizes 6 and 9. Gary Wellnitz. Call 475-7373. x8

WANT ADS

FOR SALE — 2 good quarter horses, used to children. 789-2590 after 6 p.m. x49tf

'65 FORD STATION WAGON in good condition for sale. Also Pekingese puppies for sale! 8932 M-52, Chelsea Manchester Rd. Call 428-3071. x8

CONVALESCENT CARE in Chelsea for two elderly ladies or gentlemen. Special food and care. Call 475-8985. x8

WANTED — Housekeeper for farm home. Age to 40. Call 479-6468. x8

GRASS LAKE

JUST NORTH of I-94 on black-top road, lovely setting on one acre. Large 3-bedroom home, built-in vacuum, garbage disposal, 2-car garage, large family room, full basement. Less than 10 years old, in excellent condition throughout.

VERY NICE 3-bedroom home, full basement, close to schools. Aluminum storm and screens, counter-top range, caprot and hardwood floors. Reasonably priced at \$26,800.

GOOD older 3-bedroom home, full basement, nice location, gas heat. You can't beat it for \$16,200.

Southside Realty

1-522-8469

Mark McKernan

475-8424 x8

8th Annual

PICK-UP SALE

All Prices Reduced!

Over 30 in Stock!

ONLY \$2295

For a brand new 1971 Ford, 1/2 ton F-100 Pick-Up with Fresh Air Heater, Back-up Lights, Side Mirror, Chrome Grille, Chrome Bumper, Spare Tire and fully Synchronized Transmission.

Our Sales Staff:

Lyle Christwell - John Popovich

Bob Rentschler - George Palmer

PALMER FORD

Since April 1912

Phone Chelsea 475-3271

Open Monday, Wednesday and Thursday 'til 9 p.m. Tuesday and Friday 'til 5:30 p.m. All day Saturday. x8

BLUEBERRIES

READY

You Pick

From Dexter take Dexter-Pinckney Rd. west to Island Lake Rd., then to Dancer, left on Dancer 1 1/2 miles to Beach Rd., go 1/4 mile on Beach to 10804 Beach. 3/4 mile east of Four Mile Lake, 3 1/2 miles from Dexter. x8

JOHN WEBER

AUCTIONEER & APPRAISER

Estate settlements, indoor facilities. Auction or buy outright. Free consultation and offers.

Ph. 426-3734, Dexter, Mich. x9

IRONINGS WANTED — Call 475-8923. x9

Labrador and spaniel. Phone 475-8708. x8

GROUP YARD SALE — We have emptied our attics and dug out our cupboards. Come to 415 McKinley St. for our own special sidewalk sale, Friday, Aug. 13 and Saturday, Aug. 14, 8 a.m. 'til dark. You name it we have it! x8

FOR SALE — Registered Appaloosa gelding, very gentle, good pleasure horse, 4 years old, with tack. \$200. Call 475-2875. x8

WANT ADS

THE LITTLE

FLOWER SHOP

3451 Waltrous Rd., Chelsea

Phone GR 5-5508

Flowers, corsages, arrangements and plants.

Weddings and funerals. x47tf

HELP WANTED — Please call in person. 119 S. Main. x4tf

FOR SALE — Twin tortoiseshell kittens, 50c each or 2 for 76c. Katie Donkin, ph. 475-7261. x56tf

BABY-SITTING in my home. Infant to 2 years preferred. Experienced with twins. Phone 475-2562 anytime. x8

FOR SALE — '62 Mercury. Body good, engine needs work. Make an offer. Call 475-2935. x8

WANTED TO RENT — 2- or 3-bedroom house. Excellent references. Ph. Manchester 428-8830. x10

WILL DO BABYSITTING in my own country home, by elderly lady. Any age. Phone 475-8033 anytime. x15

NEEDED — One pair of football shoes, size 8. Call 475-8268. x8

CUSTOM TAXIDERM — Call Jim's Taxidermy Shop, 475-2805. x10

WANTED TO RENT — Furnished apartment for five-year-old and myself. Call 475-5532. x8

FOR SALE — One pony mare and gelding, half Arabian. Phone 475-5548. x8

LOST — Ladies wrist watch. Vicinity of downtown Chelsea. Call between 5 and 6 p.m. 475-7192. x8

FREE KITTENS to good home. Also 2-year-old tom cat. Call Tracy Barr, 475-2035. x8

FOR SALE — '66 Chevrolet, 4-speed good condition. Phone 761-8993. x8

1960 CHRIS CRAFT 16-ft. in-board. Beautiful, shiny, natural mahogany finish. New 250 h.p. engine. Very fast. Heavy duty trailer. \$1,850. Ph. 878-3587. x8

FOR SALE — 3-speed English bike, excellent condition, \$30. Phone 475-8465. x8

RADIO, TV and stereo repair. Bill Smith, Bob Lindsay, Ph. 475-4374. x9

MATURE WOMAN to live in with elderly gentleman. Light housekeeping. Phone 475-2818 or (517) 522-4473. x9

FOR SALE — Mobile home, 2-bedroom, 10' x 58', partly furnished with new washer and dryer. \$2,700 or best offer. Call 475-8081 or 475-1150. x9

IF YOU NEED interior or exterior painting call Behnke Painting. Experienced painters, free estimates. 971-4596. x10

GARAGE & PATIO SALE — 16-ft. steel garage door, glider and lots of miscellaneous and clothing. Starts Thursday, Aug. 12, 205 Wimple St., Grass Lake. x8

CHELSEA — Lanewood 2-story, 3-bedroom house. Living room and dining room, 1 1/2 baths, air conditioned, refrigerator, built-in range, garbage disposal, humidifier, washing machine and dryer, TV antenna with rotor, fire alarm system, 1 1/2 car garage with electric door, yard sodded front and back, fenced back yard. Priced for quick sale in low \$30's. 475-7650. 32 Sycamore. x8

WANTED — Part-time help mending and restoring books. Hours flexible. Academy Book Bindery, Dexter, 426-3081. x8

YARD SALE — Antiques, collectables, misc. items. Sat., Sun., Aug. 14-15, 9 a.m. to 4 p.m. 1936 Guinan Rd., Sugar Loaf Lake. Ph. 475-2242. x8

FOR SALE — Custom-made stereo with facility for tape deck or a home entertainment center with color TV. Call after 5 p.m., 475-8363. x8

KING SIZE BED SET with two spreads, \$250. Snow blower, \$10. Ironing board, \$25. Colonial sofa, \$75. Two swivel rockers and matching ottoman, brown, \$125. Maple coffee table, office desk and swivel chair plus side chair, \$250. Call 475-7672. x8

PORCH SALE — Thursday, to Saturday, Aug. 12-14, 10 a.m. to 6 p.m. Some collectables and other goodies. Some kid's stuff. 18995 Aberdeen, North Lake, first house behind Inverness Inn. x8

FOR SALE — Wuritzer or gan. \$600; snow blower, \$125; 25 horse Scorpion snowmobile, \$500. Mrs. Hilbert, weekdays, 663-0555, evenings and week-ends, 426-8196. x10

WANT ADS

PRINTING from John's Shop—for wedding, anniversary, for any occasion. Satisfaction guaranteed. Prompt service, reasonable prices. Phone 475-7500. x9

REDUCE EXCESS FLUIDS with Fluidex, \$1.69. Lose weight safely with Dex-A-Diet, 98c, at Chelsea Drug. x15

HOUSEWIVES! MOTHERS! the "in place" this year... House of Lloyd. No collecting. No delivering! Free supplies! Bonuses! Weekly pay! Free gifts! Call Margaret, 663-8998. x18

TRENCHING — Water, electrical lines, footings, etc., 4 to 14 inches wide, 0 to 6 feet deep. Call Charles Slocum, 475-7611 evenings. x8tf

WANTED — New or used fiction and non-fiction books for use at St. Louis School for Exceptional Boys. Age group from 4 years to 10 years. Any book you donate will be appreciated. Call 475-8430. Evenings 475-5281 for pick-up. x8

FOR SALE — 1/2 ton brick-coal, \$10; must be carried out. Phone 475-2580 after 5 p.m., no calls Saturday or Friday evening. x6tf

NEWSBOY WANTED for the morning Detroit Free Press. Route would cover Lanewood Subdivision area. Minimum age 12. 475-7678. x10

ONLY ONE LEFT — AKC Boston Terrier, 3 months old, all shots, any reasonable offer accepted. 555 Chandler, Chelsea. x8

FOR SALE — 1970 Chevrolet Impala 4-door hardtop. Lots of extras. Excellent condition. Only \$2,495. 24-ft. raft. Has canopy, steel curtains, steel pontoons, 40 hp motor and trailer, \$1,650. Ph. 475-6468. x8

FOR SALE — Elgin 14-ft. boat and trailer, Sea King 20 h.p. motor, in excellent condition. Ph. 475-8994. x9

FOR SALE — 1954 Chevy Camper Van, sleeps six, runs very good. Must be seen to appreciate. Phone 475-7673. x8

WOULD LIKE TO TRADE a good portable typewriter and case for a good girl's bike. Call 475-2250 evenings. x8

REPAIR SERVICE for household refrigerators, freezers and garbage disposers. Call Bill, 426-8314. x10

THANK YOU

Our sincerest thanks goes to all who helped at the time our barn and tool shed burned last Thursday afternoon. Because of the untiring effort put forth by the Dexter and Chelsea Fire Departments, all the other buildings were saved. To a dedicated group of men — our thanks. Thanks also to the Coys for the supply of water that was taken from their lake; to Stacey's Trucking for furnishing the bulldozer; to Dave Miles for getting the electricity hooked back up; to all the neighbors who brought in sandwiches and drinks for the firemen and to all who brought food to our home. All the people who helped us clean up made our loss just a little easier to bear. We are sure the greatest people in the world live right near the Dexter-Chelsea area. Thanks to each and every one for everything. And God Bless.

Sincerely,

Charles and Pat Trinkle and family.

THANK YOU

I would like to express a sincere thank you to all our relatives, friends and neighbors for all the visits, flowers, cards, gifts, and phone calls while I was in the hospital and since my return home. A special thank you to Mom Downer for everything she did, and those who brought food into the home, and those who took care of the children. A thank you to the Rev. Kelin for his visits while I was in the hospital. I deeply appreciate everything. Mrs. Duane Downer.

THANK YOU

We wish to express our deepest appreciation for the many kindnesses, flowers, calls, and cards at the death of our beloved Matthew. A special thanks to the many doctors and nurses who worked for so many hours at Mott Children's Hospital. A special thanks to the Rev. Dickens, Burghardt Funeral Home, Mel Leach, Frank Sweeney, Art Paul and Chuck Young. Also to Barb Dresch, Marie Abdon, "The Gang," Chelsea State Bank employees, especially Menaric Walter, Gail Bauer and Roberta Paul; Wesleyan Service Guild, Chelsea Suburbanettes and so many neighbors and friends who helped in so many ways during this time of sorrow. The family of Matthew Eric Blackwell.

TEMPERATURE

Home temperature and comfort are related. Most healthy people are comfortable when the house temperature is 71 to 77 degrees.

Telephone Your Club News to GR 5-3581.

GOSO Carpet Cleaning

August is a vacation month, but if carpet cleaning is one of the jobs to be done, we have a suggestion. We recommend Host, the new method of cleaning carpets without water. The carpet is dry and ready to walk on immediately. Use our Host Electric Up-Brush. It's easy. Clean 40 sq. yds. only \$9.95. Phone for information.

MERKEL BROTHERS

Phone 475-8621

from HISTORY'S SCRAPBOOK
DATES AND EVENTS FROM YESTERYEARS

The English government separated New Hampshire from Massachusetts, August 13, 1692. August 13 is Philippine Independence Day.

Grigori Ivanovich Shlekhob founded the first Russian colony in Alaska on Kodiak Island, August 14, 1784. August 14 is V-J Day; Japan announced it would surrender, August 15, 1945.

The first Swiss colonists arrived at New Glarus, Wisconsin, August 15, 1845. The Panama Canal officially opened, August 15, 1914.

Gold was discovered in the Klondike region of Alaska, August 16, 1896. The first advertising over radio stations began August 16, 1922.

Sir Walter Raleigh's first settlers reached Roanoke Island in "Virginia", August 17, 1585. The American Press Association was founded, August 17, 1862.

The first child of English parents born in America was Virginia Dare, born August 18, 1587. The Thousands Islands International Bridge, between the U.S. and Canada, opened August 18, 1938.

The "Constitution" was victorious over "Guerriere", August 19, 1812.

Standard Ads Are a Good Shopping Guide!

TODAY'S THOUGHT

By LOUIS BURGHARDT

People in general know more about the universe today than ever before. In our constantly advancing space technology, we see the spectacle of uncountable celestial systems that causes speechless wonder. The Milky Way, for example, has more than 30,000,000 stars, many of them larger than our sun — which incidentally is a million and a half times larger than our earth. Scientists tell us there are millions of billions of heavenly bodies in our own galaxy. It is all beyond human imagination. The mathematical exactness of every detail in the firmament in which the sun, moon and stars exists is a phenomenon without equal. Man has vast knowledge but NO MAN knows what lies beyond our horizon in the infinite stretch of space.

It is illogical to suppose the phenomena of all this wondrous creation is something that just came about by accident — or by explosion of something or other. No one but God can make something from nothing. There was a beginning. He started it. He sustains it. And He can change or destroy it any time He decides to do so. . . . BURGHARDT FUNERAL HOME, 214 East Middle St., Chelsea, Mich. Phone GR 5-4141.

THANK YOU

Our sincerest thanks goes to all who helped at the time our barn and tool shed burned last Thursday afternoon. Because of the untiring effort put forth by the Dexter and Chelsea Fire Departments, all the other buildings were saved. To a dedicated group of men — our thanks. Thanks also to the Coys for the supply of water that was taken from their lake; to Stacey's Trucking for furnishing the bulldozer; to Dave Miles for getting the electricity hooked back up; to all the neighbors who brought in sandwiches and drinks for the firemen and to all who brought food to our home. All the people who helped us clean up made our loss just a little easier to bear. We are sure the greatest people in the world live right near the Dexter-Chelsea area. Thanks to each and every one for everything. And God Bless.

Sincerely,

Charles and Pat Trinkle and family.

THANK YOU

I would like to express a sincere thank you to all our relatives, friends and neighbors for all the visits, flowers, cards, gifts, and phone calls while I was in the hospital and since my return home. A special thank you to Mom Downer for everything she did, and those who brought food into the home, and those who took care of the children. A thank you to the Rev. Kelin for his visits while I was in the hospital. I deeply appreciate everything. Mrs. Duane Downer.

TEMPERATURE

Home temperature and comfort are related. Most healthy people are comfortable when the house temperature is 71 to 77 degrees.

GOSO Carpet Cleaning

August is a vacation month, but if carpet cleaning is one of the jobs to be done, we have a suggestion. We recommend Host, the new method of cleaning carpets without water. The carpet is dry and ready to walk on immediately. Use our Host Electric Up-Brush. It's easy. Clean 40 sq. yds. only \$9.95. Phone for information.

MERKEL BROTHERS

Phone 475-8621

THANK YOU

We wish to express our deepest appreciation for the many kindnesses, flowers, calls, and cards at the death of our beloved Matthew. A special thanks to the many doctors and nurses who worked for so many hours at Mott Children's Hospital. A special thanks to the Rev. Dickens, Burghardt Funeral Home, Mel Leach, Frank Sweeney, Art Paul and Chuck Young. Also to Barb Dresch, Marie Abdon, "The Gang," Chelsea State Bank employees, especially Menaric Walter, Gail Bauer and Roberta Paul; Wesleyan Service Guild, Chelsea Suburbanettes and so many neighbors and friends who helped in so many ways during this time of sorrow. The family of Matthew Eric Blackwell.

TEMPERATURE

Home temperature and comfort are related. Most healthy people are comfortable when the house temperature is 71 to 77 degrees.

GOSO Carpet Cleaning

August is a vacation month, but if carpet cleaning is one of the jobs to be done, we have a suggestion. We recommend Host, the new method of cleaning carpets without water. The carpet is dry and ready to walk on immediately. Use our Host Electric Up-Brush. It's easy. Clean 40 sq. yds. only \$9.95. Phone for information.

MERKEL BROTHERS

Phone 475-8621

THANK YOU

I would like to express a sincere thank you to all our relatives, friends and neighbors for all the visits, flowers, calls, and cards at the death of our beloved Matthew. A special thanks to the many doctors and nurses who worked for so many hours at Mott Children's Hospital. A special thanks to the Rev. Dickens, Burghardt Funeral Home, Mel Leach, Frank Sweeney, Art Paul and Chuck Young. Also to Barb Dresch, Marie Abdon, "The Gang," Chelsea State Bank employees, especially Menar

Community Calendar



St. Mary Bake Sale, 10 a.m. to 1 p.m. Saturday, Aug. 14 at Sylvan Township Hall

OHS cheerleaders car wash, 8 a.m. to 4 p.m. Saturday, Aug. 21 at the Pump and Pantry.

Thursday Night Guys and Gals Mixed League bowling meeting, 8 p.m. Thursday, Aug. 12 at Chelsea Lanes.

Annual Masonic picnic, 6:30 p.m. Aug. 19 at Pierce Park.

Tri-City Mixed bowling league, 7 p.m. Friday, Aug. 20 at Chelsea Lanes.

La Lache League, an organization of mothers interested in breast-feeding, meets 8 p.m. Tuesday, Aug. 17 at the home of Diane Rinn, 2323 N. Steinbach Rd., Dexter. Linda Siebert will lead a discussion on nutrition and weaning.

Chelsea Social Service, second floor of the Municipal Building, is open each Tuesday and Thursday, afternoon from 2 p.m. to 5 p.m. to assist persons with problems, either through counseling, or referral to other agencies, when indicated. Limited financial help may be given. The office also maintains a clothing depot for new and used clothing and bedding which is given without charge. All visitors welcome. Phone 475-4581.

Civil Defense officials remind: "Tornado watch" means that weather conditions indicate a tornado may develop. "Tornado warning" means that an actual tornado funnel has been sighted. Information is available at the Chelsea Municipal Building or by contacting Elwyn Beach, civil defense director, 479-6031.

Agricultural Entrepreneurs Farm Bureau pot-luck picnic Sunday, Aug. 15 at the home of Mr. and Mrs. Edwin Coy at 12:30 p.m. Drinks will be furnished and swimming will be provided.

American Legion and Auxiliary hospital equipment available by contacting Loren Keezer at 475-2768 or 475-3481.

TOPS Club at library, Wednesday afternoon group, 12:30 p.m. For information call 426-4549. Tuesday evening group, 8 p.m. For information call 475-8952.

Inquiries regarding the Chelsea blood bank may be directed to Harold Jones in the event that Mrs. Dudley Holmes is unavailable, or to Mrs. Pauline McKenna, American Red Cross in Ann Arbor, 671-5300.

Fall bowling meeting of Chelsea Lanes Mixed League, at Chelsea Lanes, Friday, Aug. 20, at 8 p.m.

Spaulding for Children's Old Fashioned Ice Cream Social, Sunday, Aug. 22 3 to 8 p.m. at Spaulding Farm, 3060 Waltrous Rd. There will be hot dogs, and other food sufficient for a complete meal, a fish pond, cake walk and other activities. Proceeds will go to Spaulding for Children. xadv9

Stockbridge Squares will give an exhibition of square dancing at the Chelsea Community Fair the evening of Aug. 28. x10

North Sharon Bible church bible school Aug. 9-13 from 9 a.m. to 11:30 a.m. Open to all children. Contact Mrs. Gerald Proctor, 475-2012 or Mrs. William Enslin, 429-3594 if transportation is needed.

CHS cheerleaders bake sale, Aug. 13, 10 a.m. on Main St. adv8

Scout Troop Returns from Camping Trip

Members of Boy Scout Troop 465 have just returned from a week-long camping tour of Michigan.

Boys in the troop, Jim Barnes, Joe Keizer, Jeff Kiel, Doug Lorenz, Scott McClain and Tom Mshar were accompanied by leaders Don Mshar and Bob Snyder.

The scouts first stopped at Higgins Lake where they camped in a special Scout Camping Area. While at Higgins both boys and adults raced go-carts.

Monday night was spent on the Au Sable river, where everyone got wet.

The Troop then camped near Mackinac City, spending Wednesday on Mackinac Island. They tried unsuccessfully to beat the 18-minute bicycle record for circling the island.

The scouts spent Thursday at the Sand Dunes where they rode in the famous dune-buggies and swam in Lake Michigan.

Part of the money for the trip was raised by the troop's sale of tool driver kits.

Waste Treatment . . .

(Continued from page one)

tem, according to Robert D. Rudd, plant manager.

The system has been approved by the village, the Michigan Water resources commission and the state health department.

Approximately 80 percent of the phosphate previously discharged is now pumped back into the plant's system for reuse while sludge and other deposits are hauled away by a licensed disposal contractor, Rudd explained. The rinse water that flows into the village sewage system is well within acidity levels set by authorities.

DEATHS

Michael M. Steele

17-Year-Old Youth Dies Yesterday After Long Illness

Michael M. Steele, 17, 634 Taylor St., died Wednesday at St. Joseph Mercy Hospital after a long illness.

Born Feb. 15, 1954 in Ann Arbor, he was the son of Robert and Helen Eschelbach Steele.

Michael was a junior at Chelsea High school and a member of St. Mary Catholic church.

He is survived by his parents; one brother, Robert David Steele, Jr. of Chelsea; his paternal grandfather, George Steele, Chelsea; his maternal grandfather, Rudolph Eschelbach, Chelsea; and several aunts and uncles.

Funeral services will be held at St. Mary Catholic church, the Rev. Fr. Francis Wahowick officiating. Time of the services has not yet been decided. Burial will be in Mt. Olivet Cemetery.

Contributions may be made to the American Cancer Society in care of Dr. John Nixon, St. Joseph Mercy Hospital, Ann Arbor.

Mrs. Henry Johnson

Danish Native Dies Friday at Chelsea Community Hospital

Agneta A. Johnson, 16080 Seymour Rd., Grass Lake, died Friday at Chelsea Community Hospital. She was 71.

Born Oct. 31, 1899 in Copenhagen, Denmark, she married Carl Hansen who preceded her in death. She married Henry Johnson in 1945. He survives.

She was a member of the Waterloo United Methodist church and the Danish Sisterhood.

In addition to her husband, she is survived by one son, Oscar Hansen of Grass Lake; two grandsons, Douglas and Steven Hansen, and several brothers and sisters in Denmark.

Funeral services were held at 1:30 p.m. Monday in the Burghardt Funeral Home, the Rev. George T. Stanford officiating. Burial followed in Waterloo's Mt. Hope Cemetery.

Florence Finkbeiner

Former Sebewaing Resident Dies at Methodist Home

Miss Florence Finkbeiner of the Chelsea Methodist Home died Aug. 6 at the age of 88.

She was born in Crediton, Ontario, July 30, 1885. She was the daughter of David and Anna Braun Finkbeiner.

Miss Finkbeiner worked as a saleslady for J. L. Hudson Co., Detroit, for many years. She came to the Home July 31, 1970 from Sebewaing.

She is survived by three sisters, Miss Luella Finkbeiner of the Chelsea Methodist Home, Miss Winifred Moline of Moline, Ill., and Mrs. Edwite Millerwise of Sebewaing.

Funeral services were held Monday, Aug. 9 at 10 a.m. in the Chelsea Methodist Home Chapel, with the Rev. Richard A. Clemens officiating. Burial followed at Memorial Park Cemetery in Sebewaing. Arrangements were made by the Staffan Funeral Home.



NATIONAL JA CONFERENCE DELEGATES: Richard Egeler and Anne Marie Lewandowski, both students at Chelsea High, will journey by bus with 104 other Southeastern Michigan students to the

28th annual National Junior Achievers Conference. The conference, which is held in Bloomington, Ind., Aug. 15-20, attracts more than 2,200 young people from across the nation.

Two CHS Students Will Attend National JA Conference in Indiana

Anne Marie Lewandowski and Richard Egeler, Chelsea High school students, will be representing the Chelsea area at the 28th annual National Junior Achievers Conference to be held at Indiana University, Bloomington, Ind., Aug. 15-20.

Richard and Anne Marie were chosen on the basis of their past records in Junior Achievement, a

program which gives high school students the opportunity to learn about the American business system by operating their own businesses.

With the help of more than 5,000 sponsoring firms in the southeast Michigan area, groups of young people form and operate small companies. They raise capital, determine leadership, and manufacture and sell a product.

Along with about 100 other Junior Achievement delegates from southeastern Michigan, Anne Marie and Richard will join 2,200 other students from across the country to participate in discussion groups, workshops, recreational activities and contests that have monetary and scholarship awards.

Mission: Michigan got its start in Chelsea where the first Mission: Michigan service was held last year. More than \$25,000 has been pledged to the Mission, of which \$11,231 has been received to date.

Gen. D. E. Beach Speaks to Military Academy Grads

Chelsea's General Dwight E. Beach was the guest speaker for the 14th graduation of the Michigan Military Academy held at Custer Reserve Forces Training Site recently.

General Beach is a West Point graduate who retired from the U. S. Army in 1968. During his 40-year military career he had several key commands, including that of Commander in Chief, U. S. Army, Pacific.

In speaking to the largest class ever graduated from the Academy, General Beach told the cadets what the Army was like when he received his commission.

He said that in the 1930's the Army had a volunteer army, and that now they're talking about having one again. He also pointed out that the military was as unpopular then as it is now. "The military has nowhere to go but up," the General said in predicting a bright future for the 116 graduates.

General Beach also stressed the importance of discipline in the Army. "With it, nothing is possible. Without it, nothing is," he said.

Nearly 600 people were present at the graduation ceremonies for the class of 96 Michigan Army National Guardsmen, 15 Michigan Air National Guardsmen and five U.S. Army reservists.

T-Ball League FINAL STANDINGS

	W	L
G.A. Sales & Service	6	2
Palmer Motor Sales	5	3
Murphy's Barber Shop	3	5
Central Fibre Products	3	6

AGE 23

Married Male Driver

Your A-O man will save you money on your car insurance. No surcharge or higher rate. See your A-O man — he's all out for you.

A. D. MAYER AGENCY, INC.

"Your Protection Is Our Business" Phone 479-5061

115 Park St. Chelsea

Auto-Owners INSURANCE COMPANY

Football Practice . . .

(Continued from page one)

Thursday, Aug. 26 at the Chelsea Medical Clinic offices of Dr. Borton and Dr. Miller for both Junior and Senior High boys.

The gym will be open for pre-season conditioning on Monday, Wednesday, and Thursday from 6 p.m. to 8 p.m.

Any young man who wants to play football and did not receive a letter should contact Phil Bareis at 475-7531.

Thefts Reported . . .

(Continued from page one)

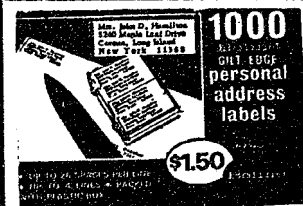
Also on Sunday, Aug. 8, thieves stole a Detroit Free Press newspaper vending stand from in front of the Pump & Pantry, 295 S. Main. It was estimated that the stand contained \$10 in change at the time it was stolen.

Chelsea police are investigating.

Not many people are as smart as they think they are.

Smoking Hazards

London — The Royal College of Physicians report the typical cigarette smoker pays for his habit by forfeiting 5½ years of his life and demands new laws making smoking illegal in airlines, buses, trains and most public places. The most important challenge to preventative medicine is to get people to stop smoking, the report said.



Now Available at

The Chelsea Standard

Sidewalk Sale

Friday and Saturday, Aug. 13-14

Many Items On Sale at

BELOW 1/2 PRICE

Sales inside and outside

FOSTER'S MEN'S WEAR

GAMBLES SIDEWALK DAYS GAMBLES

SAVINGS IN ALL DEPARTMENTS!



Savings Up to \$100.00

Check These Prices And Save!!!

22" SELF-PROPELLED MOWER

3 1/2 h.p. Reg. \$119.95

Now \$89.95

22" 3 1/2 h.p. MOWER

Our Best. Reg. \$84.95

\$79.95

30" 8 h.p. RIDER

Automatic Drive. Reg. \$379

\$297.88

34" 8 h.p. TRACTOR

Automatic Drive. Reg. \$479

\$359.99

LAWN & GARDEN SAVINGS

Lawn Fertilizer

23-7-10. Reg. \$3.98

Now \$2.98

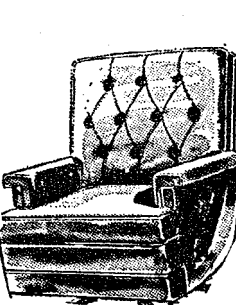
WEED & FEED. Reg. \$4.29

Now \$2.98

HAIR CURLER SETS REDUCED

Savings on Summer Sporting Goods

1/2 Price



SWIVEL ROCKERS

Reg. \$59.95

Now \$29.95

Now \$29.95

Now \$29.95

Now \$29.95

Now \$29.95

Now \$29.95

Now \$29.95

Now \$29.95

Now \$29.95

Now \$29.95

Now \$29.95

Now \$29.95

Now \$29.95

Now \$29.95

Now \$29.95

Now \$29.95

Now \$29.95

Now \$29.95

Now \$29.95

Now \$29.95

Now \$29.95

Now \$29.95

Now \$29.95

Now \$29.95

Now \$29.95

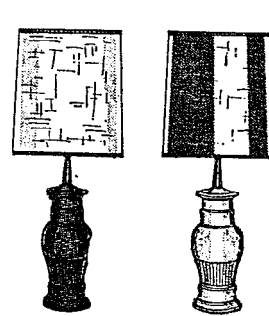


TABLE and FLOOR LAMPS

Priced to Sell

Shop & Save

Shop & Save

Shop & Save

Shop & Save

Shop & Save

Shop & Save

Shop & Save

Shop & Save

Shop & Save

Shop & Save

Shop & Save

Shop & Save

Shop & Save

Shop & Save

Shop & Save

Shop & Save

Shop & Save

Shop & Save

Shop & Save

Shop & Save

Shop & Save

Shop & Save

Shop & Save

Shop & Save

Shop & Save

Shop & Save

Shop & Save



CORONADO REFRIGERATOR

SPECIAL SAVINGS!

9.9 Cu. Ft. REFRIGERATOR

Compact. Reg. \$189.95

\$159.95*

12 Cu. Ft. REFRIGERATOR

White. Reg. \$229.95

\$199.95*

16 Cu. Ft. REFRIGERATOR

Our Best. Reg. \$329.95

\$289.95*

17.5 Cu. Ft. REFRIGERATOR

Extra Large. Reg. \$309.95

\$269.95*

\$269.95*

\$269.95*

\$269.95*

\$269.95*

\$269.95*

\$269.95*

\$269.95*

\$269.95*

\$269.95*

\$269.95*

\$269.95*

\$269.95*

\$269.95*

\$269.95*

\$269.95*

SIDEWALK SALE

Friday and Saturday, Aug. 13-14

RECORDS-CASSETTES

8-TRACK STEREO

Buy 4—Get 1 FREE

(In Same Price Range)

Check Us for Many Other APPLIANCE SPECIALS

HEYDLAUFF'S

(Formerly Frigid Products)

113 North Main St.

Phone GR 9-6651

Plus Savings of Cost & Below at Our Sidewalk Tables

THE SUPERMARKET THAT'S JUST A LITTLE BIT BETTER

Stop & Shop

14901 Old U.S.-12
Corner at M-52
Chelsea



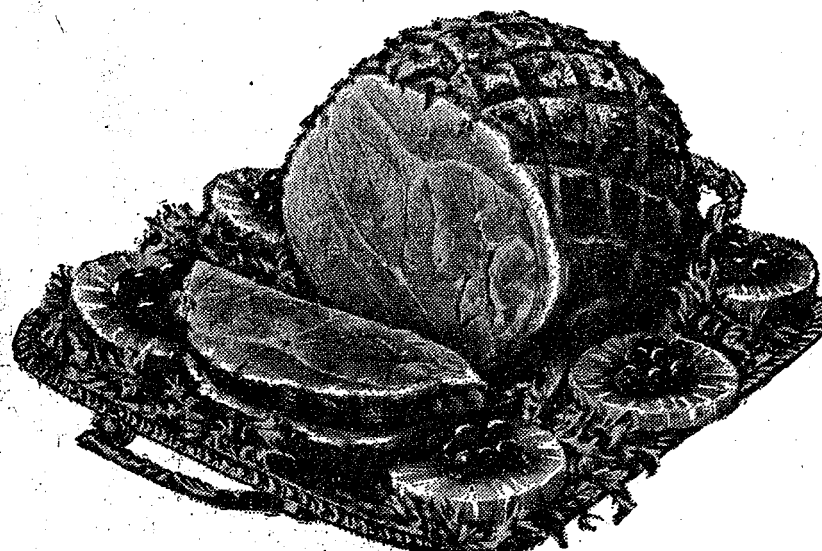
THE KNOW HOW OF INTELLIGENT MEAT BUYING IS REALLY 'KNOW WHERE'

Our customers have learned to depend on the outstanding quality of Stop & Shop meats — unfailing satisfaction with every cut they purchase. The finest quality, together with the experienced expertise of our meat cutting experts, makes an unbeatable combination!

Prices Effective Thursday, August 12, 1971,
through Sunday, August 15, 1971.

SEMI-BONELESS WHOLE SMOKED HAMS 59^c lb.

Hickory Smoked! Sugar Cured! Fully Cooked!



U.S.D.A. Choice Beef
Club Steak **\$1²⁹ lb.**
Something Special!

U.S.D.A. Choice, Boneless
Delmonico Steak **\$1⁹⁹ lb.**

U.S. Gov't Insp. Top Quality, Fresh
Sliced Beef Liver **59^c lb.**

Eckrich All-Meat
Skinless Franks **69^c**
12-Oz. Pkg.

U.S.D.A. CHOICE BEEF RIB STEAKS

Cut Short
Tender! Juicy!
Delicious! **99^c lb.**

AGAR TOP QUALITY CANNED HAMS

Fully Cooked! Ready to Eat!

3-Lb. **\$2³⁹**
Can

U.S.D.A. Choice Boneless Beef
Cube Steak **\$1²⁹ lb.**

Top Quality! 100% Pure Beef! Fresh
Ground Chuck **89^c lb.**
3 Lbs. or More

Fresh Quartered
Pork Loin **59^c lb.**
Sliced Into Chops

Peschke's All Meat Sliced
Bologna **65^c lb.**
14-Oz. Pkg.

CRISPY FLAKE

POTATO CHIPS

13-Oz. **44^c**
Bag

McDONALD SMALL OR LARGE CURD

COTTAGE CHEESE

1-Lb. **23^c**
Crtn.

ASSORTED FLAVORS

CANADA DRY POP

28-Oz. **22^c**
No-Return Bottles

VAN CAMP'S LIGHT CHUNK

TUNA 35^c

6 1/2-Oz. Can

Courteous, Friendly Service

For Your Shopping Convenience . . .

OUR NEW SUMMER HOURS

Monday thru Saturday

9 a.m. to 9 p.m.

Sunday, 10 a.m. to 5 p.m.

Plenty of FREE PARKING

McDONALD 2% LOW FAT

MILK

Gal. **75^c**
Crtn.

CARNIVAL

ICE CREAM BARS

12 pak **59^c**

ICE COLD BEER & WINE

Farm Fresh Produce

Vine Ripened, Red, Ripe		
TOMATOES	Lb.	29^c
U. S. No. 1 Michigan All Purpose		
POTATOES	10-Lb. Bag	66^c
California		
BARTLETT PEARS	Lb.	25^c
Home-Grown		
GREEN PEPPERS	Ea.	9^c
Home-Grown		
CUCUMBERS	Ea.	9^c

CAMELOT POP

Root Beer - Red Pop - Cola

3 1/2 Gal. **\$1**
No-Return Bottles

GERBER'S STRAINED

BABY FOODS

4 1/2-Oz. **10^c**
Jar

MEADOWDALE SWEET CREAM

BUTTER 69^c

1-Lb. Print

MICHIGAN

HEAD LETTUCE 15^c

SQUIRE

CHARCOAL BRIQUETS

20-Lb. **99^c**
Bag

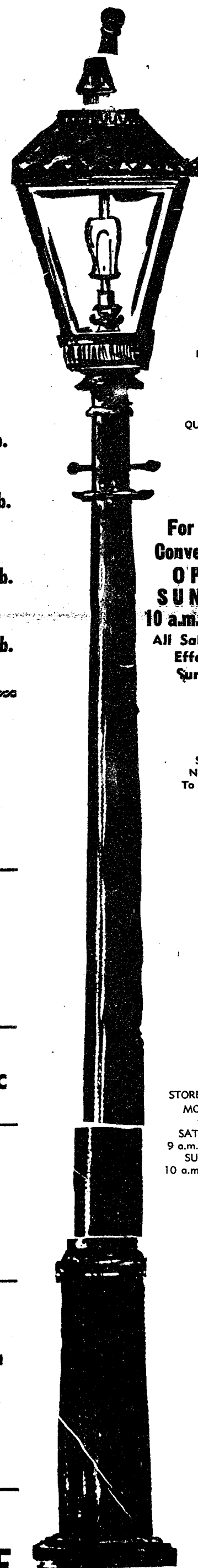
Shop in a pleasantly cool
AIR-CONDITIONED STORE

WE
RESERVE
THE
RIGHT
TO
LIMIT
QUANTITIES

For Your
Convenience
**OPEN
SUNDAY**
10 a.m. - 5 p.m.
All Sale Prices
Effective
Sundays

Sorry,
No Sales
To Dealers

STORE HOURS:
MONDAY
thru
SATURDAY
9 a.m. to 9 p.m.
SUNDAY
10 a.m. to 5 p.m.





THE NEW FAIR SERVICE CENTER building will be ready in time for this year's fair. Designed by Arthur Lindauer, the fully heated 40' by 80' building will feature a 60' by 40' dining area and an 18' by 40' kitchen. The building will have a full basement. The center, which will have rough-sawn cedar siding, is being built at a cost of \$55,000, half of which will be paid by the state in \$2,500

annual installments. Clubs, youth groups and wedding parties will be able to rent the facility after its completion. Contractors working on the building are Bridgewater Lumber, Rowe Plumbing, Roehm Masons, Merkel Furniture, Heller Electric, D. L. Hamlin and John Steele. Many residents have donated time to work on the building, and others wishing to do so should contact Earl Heller.

BOR & STRIKE LAW

Organized labor has vowed an out fight in Congress against President Nixon's effort to win a w antistrike law and other high-iority White House legislation. spokesman for AFL-CIO Presi-ld George Meany said that it uld be a year of legislative hiting.

ON OVERPRICING DEFENSE

Government auditors have found overpricing by defense contractors in more than half of the military contracts examined in a spot check. The findings, reported to Congress showed that 18 procurements totaling \$47 million, were \$1.5 million higher than the cost indicated by data available to the contractors.

Letters to the Editor

Dear Editor:

I wish to compliment the managers of the Little League and Babe Ruth League, excluding Merle Leach, for the tremendous amount of partiality shown, during the season, toward their sons and favorites.

I wish to make particular mention of the disgusting manner in which Messrs. Heydlauff, Dresch and Check ran the "All-Star" game. When I approached Mr. Larson, during the game, concerning this matter, I was told, "They are only required to play any player two innings, once at bat."

I challenge these managers or Mr. Larson to publish in this newspaper a list showing each boy who played in the "All Star" game, what position, or positions, he played, how many innings at each, and what position he played regularly during the season.

According to my calculation, each boy in the "All Star" game could have been allowed 3.93 innings in the game. Yet, I know of at least two boys who each played two innings, some who played at least six, giving particular attention again to their sons and favorites. This means that they took from some to give to others.

I hope they are all very proud of themselves, as they have every right to be, for showing so much lack of concern for the feelings of others.

A Disgusted Mother.
Mrs. Dorothy Sweet.

Washtenaw County

Metropolitan Planning Comm.

Dear Sirs:

I wish to express my emphatic opposition to the proposed "Mill Creek Park" and urge you to oppose it also. Among the many valid reasons for abandoning this ill conceived project I list the following:

1. To force hundreds of citizens to give up their homes for park land and an artificial lake is an arrogant denial of such Constitutional rights as to be secure in their homes and equal protection under the law. In our country government was instigated to protect man's right to own property not to destroy it.

2. If a man's livelihood, his business, his heritage, can be taken away by government bureaucrats for such a frivolous purpose as providing others a place to play (not work) then we in this country no longer own our own property and no one is safe from the whims of government bureaucrats.

3. It is fiscal insanity to drive hard-working industrious tax-paying farmers and others from their valuable farm land when in Michigan there are thousands of acres near worthless, unfarmable land and thousands of natural lakes.

4. If people were starving, or even hungry, it would be considered almost a criminal act to further reduce the food supply. Yet this is exactly what is being proposed in the face of predictions that before many years this country will face a severe food shortage. Some pestilence or adverse weather conditions would make this a reality at any time.

5. The Mill Creek Park proposal with its artificial lake made by damming the creek is extremely impractical in many ways such as its adverse impact on near-by and adjacent areas; loss of much needed tax base at a time when all units of government are in desperate need of funds for essential needs; problems of inadequate highways, maintenance, and policing with their accompanying cost are unsolved; impracticality of large parks in comparison with scattered smaller parks; location not in the area of greatest need.

6. It is cruel and inhuman to torture and harass the citizens in this proposed park area with the fear and anxiety of being forced to give up their beloved homes homes into which they have put years of long hard labor and much of their hard-earned income in hopes of some future recompense.

And how does a mother or father reassure the worried child who wakes in the night crying with the fear of having to leave the home he loves.

We have laws against cruelty to animals. Shouldn't the same consideration be given to humans? Please vote to abandon this irrational Mill Creek Park proposal.

Respectfully
S. M. H.

Expressing faith in your religion does not insult those who disagree with you.

**EYES
EXAMINED
and
GLASSES
FITTED**

For Appointment
Call GR 5-5431

A. A. PALMER, M.D.
110 E. Middle St.
Chelsea, Mich.

WANTED CEMENT & BLOCKWORK

All types—Poured walls, floors, drives and foundations.

CECIL CAUDILL

(517) 851-3847

We would like to introduce
Mr. Walter Prater
of Stockbridge
Our New Barber

Again, we can give appointment service, along with regular walk-in service.

CALL 475-4933 FOR APPOINTMENT

JACK & SON BARBERS

105 W. MIDDLE ST.

GREAT 1/2 PRICE



Friday - 8 a.m. to 9 p.m.

Saturday - 8 a.m. to 5:30 p.m.

A Great Selection of Men's

SUITS - SPORT COATS - TOP COATS

All Reduced to a Fantastic Low 1/2 Price

PERMA - PRESS

SLACKS

Reg. \$9 to \$13

NOW

\$5.00 2 for \$9.00

MEN'S SHOES

Assortment of Canvas, Leather, etc.

Reg. \$5 to \$20

Now \$2 to \$5

100% WOOL

TOPCOAT

Reg. \$65 to \$75

Now - \$15.00

WHITE SHIRTS

LONG-SLEEVE

Reg. \$7.50

NOW

\$2.00 3 for \$5.00

STRIETER'S MEN'S WEAR

"The Place To Go for Brands You Know" Air-Conditioned for Your Shopping Comfort

SIDEWALK DAZE at CHELSEA LUMBER

Fri-Sat.
Aug. 13-14

WE HOPE YOU'LL READ THIS CAREFULLY - THESE ARE GREAT BUYS IF YOU CAN USE 'EM!

3,000 BOARD FEET LUMBER, Mixed Boards and 2 x 4 thru 2 x 10

SOME WARPAGE, SOME SPLITS, SOME GOUGES

TO BE SOLD AS 1 LOT, YOU HAUL IT

\$75.00 *We won't guarantee the quantity but 3,000 ft. is little!

20 INTERIOR DOORS • BIRCH OR LAUAN

MANY SIZES • SLIGHT DEFECTS

\$5.00 ea.

EXTERIOR DOORS

\$9.00 ea.
LIMITED NUMBER

ALUMINUM STORM SASH

\$5.88 ea. Reg. \$13.95

2 28" x 62" 1 30" x 67"
10 30" x 62" 1 62" x 22"
4 30" x 37" 1 46" x 63"
3 24" x 62" 1 35" x 27" 1-LITE
1 45" x 29" 1 15" x 27" 1-LITE

1 109" x 60 1/2" 3-SECTION

ST. SASH FOR PICT. WD. OR PORCH ENC.

\$17.00 Reg. \$53.00

CLOSET DOORS

1 3/0 x 6/8 2-Set. Steel Slider, Reg. \$19.00 SALE \$3.00
1 4/0 x 6/8 4-Dr. Birch Bifold, Reg. \$22.80 \$11.75
1 6/0 x 6/8 4-Dr. Lauan Bifold, Reg. \$24.35 \$13.75
1 4/0 x 6/8 4-Dr. Louvered Bifold, Reg. \$29.75, \$19.75

CABINETS & COUNTERTOPS

1 70" (25" Deep) Formica Top, Reg. \$32.25 SALE \$19.00
1 26" (21" Deep) Vanity Top, Reg. \$21.00 \$12.00
1 48" (25" Deep) Formica Top, Reg. \$24.40 \$11.00
(With Bullnosed Right Front Corner)
1 37" (22" Deep) Marble Top & Vanity Bowl
Use with 36" Base. A beauty, Reg. \$78.90 \$49.00
1 9" Wide x 30" Wall Cabinet, Reg. \$29.80 \$17.50
2 18" Wide x 30" Wall Cabinet, Reg. \$32.25 \$19.00
1 39" Wide x 30" Wall Cabinet, Reg. \$51.25 \$29.50
1 33" Wide x 30" Wall Cabinet, Reg. \$60.50 \$42.00
1 45" Wide x 36" Base Cabinet, Reg. \$98.75 \$69.00
1 21" Wide x 36" Base Cabinet, Reg. \$58.25 \$39.00
1 10" Wide Base What-Not Shelf, Reg. \$26.50 \$13.00
1 9" Wide Wall What-Not Shelf, Reg. \$15.75 \$9.00

ALUMINUM SHUTTERS

3 PAIR 14" x 5' BLACK, \$9.00. REG. \$13.10
2 PAIR 14" x 5' WHITE, \$9.00. REG. \$13.10

1 PAIR BLACK
14"x4' \$7.50. Reg. \$11.70

PRE-FINISHED PANELLING \$1.99

33 4' x 8' (MOST ARE ONE-OF-A-KIND BUT COULD BE INTERESTING TO MIX - OR PAINT)

VALUES TO \$14.95

4 ONLY PATIO KING

FOLDING STEEL

PICNIC TABLE FRAMES

Add 5 - 2 x 10's

6 Ft. or 8 Ft.

To Complete.

\$3.95
Reg. \$8.95

BLACK IRON

TABLE LEGS

HAIRPIN STYLE

16" SET OF 4 \$1.99

12" SET OF 4

29" SET OF 2 99c

YOUR CHOICE

**"SHELVES
A PLNTY"**

(changing shelf brackets)

easy as driving a spike

Perfect for
Garage or Basement!

Use with 12" shelf boards of desired length for sturdy, useful, "instant" shelving.

18 ONLY 5-SHELF BRACKETS (60" HIGH)

\$1.00 ea.

Reg. \$2.95

3 ONLY 3-SHELF

75c Reg. \$1.85

2 ONLY 2-SHELF

50c Reg. \$1.25

PORTER-CABLE

Power Screwdriver

\$19.88 Reg. \$39.95
2 Only

2 Aluminum Awnings

1 8 Ft. Wide by 64" Deep

1 8 Ft. Wide by 60" Deep

\$49.00 YOUR CHOICE REG. \$110.00

(AWNINGS ARE WHITE & UNASSEMBLED)

1000 PCS. KENTILE

9"x9" VINYL-ASBESTOS FLOOR TILE

MIXT COLORS AND PATTERNS
5c ea.

\$30.00 FOR THE LOT

Also 140 Pcs. 12"x12"

- 9c Ea., Reg. 21c

DECORATOR

WALL BRICK

GLUE-ON TYPE

GOLDEN-BUFF COLOR

30 Sq. Ft. **\$10.00** Reg. \$25.00

1 Gal. Adhesive \$5.00. Reg. \$7.95

(WE ONLY HAVE THE QUANTITY SHOWN)

CABINET HARDWARE

★ KNOBS, 9c ea. - Values to 50c

★ PULLS 11c ea. - Values to 60c

★ HINGES 17c ea. - Values to 80c

OR THE WHOLE LOT \$30.00!

(ALL NEW, ALL CELLOPHANE PACKED)

KAISER ALUMINUM

SHADE-SCREEN

1 PART ROLL, 4 FT. BY 20 FT.

\$6.00 REG. \$20.00

"COMFORT STATION"

Chrome-framed TP holder

and magazine rack!

Recesses in 14" x 20" opening

\$3.00 REG. \$9.95
1 ONLY

FOLDING STEEL

SAWHORSE BRACKETS

36 PAIR **\$1.37** Reg. \$1.99
PR.

1000 PCS. ARMSTRONG

CEILING TILE

12-INCH BY 12-INCH

VALUES 11c TO 20c EACH **5c ea.**

Mixed Patterns

Max. 180 Sq. Ft. 1 Kind

OR THE LOT - \$30.00!

100 PCS. ARMSTRONG

2' x 4' CEILING PANELS

(Meant for drop ceiling but could be nailed or glued to existing surface.)

39c ea. Reg. \$1.25 & Up

OR \$30.00 FOR THE LOT

25 NEW LITE FIXTURES at 50% PLUS 10% OFF!!

CHELSEA LUMBER CO.

Open Saturday 'til 3:30 p.m.

Dial 475-3391

Babe Ruth Baseball Teams Close Out Fun-Filled Season

In Babe Ruth League action for the end of the season, undefeated Chelsea "A" played undefeated Manchester "A" in Manchester, July 20, losing an error-filled game, 8 to 3.

In the top of the first inning Chelsea scored two runs on one walk and four errors. Manchester got three easy runs in their half of the second as Chelsea committed four errors and walked three men. Manchester continued to pull ahead in the final innings to win the game.

On Thursday, July 22, Chelsea "A" met Dexter, at Dexter, and lost, 10 to 4, ending their title hopes. Perry Johnson, Ron Clark and Paul Wood picked up Chelsea's only hits.

On Tuesday, July 27, Chelsea "A", aided by 19 walks but only two hits, defeated Manchester "B", 9 to 4. Chelsea "A", suffering from a batting slump, still had the bases loaded in every inning. Dan Boham and Mike Nadeau had Chelsea's only hits. Billy Clark and Mike Tobin pitched for Chelsea.

Chelsea "A" defeated Chelsea "B" on Saturday, July 28 by a score of 7 to 3, ending their season with a 7-2 record.

In the top of the first, Chelsea "A" loaded the bases on walks, and scored four runs when Perry Johnson hit a home run. In the bottom of the first, Chelsea "B" threatened, but did not score.

Dave Lauhon walked and then stole second. Larry Sweet followed with a walk, and a double steal was attempted. Catcher Mike Nadeau threw to third, and got his man. Later that same inning, Nadeau picked a runner off third base to end the "B" team's attack.

In the third inning, Ron Clark hit a home run for Chelsea "A". A double by Gary Wellnitz and a single by Mike Nadeau put Chelsea "A" ahead, 7-0.

Perry Johnson pitched no-hit ball for Chelsea "A" during the first four innings. Billy Clark took over mound duties in the fifth and pitched no-hit ball until the seventh.

In the seventh, Chelsea "B" picked up their runs after the bases were loaded on two walks and an error. Larry Sweet, Howard Haselschwardt and Tom Stock hit three consecutive singles, sending in the runs, before the inning ended.

Chelsea "C" team pulled out two impressive victories last week, defeating both Manchester "A" and Chelsea "B" by one point.

With "Gino" Coltre, Joel Sprague and Randy Musbach getting key hits, and fine pitching by Dave Alber and Mike Murphy, Chelsea managed to come from behind in the seventh inning, scoring three runs to defeat Manchester, 5 to 4.

In a game against Chelsea "B", Chelsea "C" scored six runs in the bottom of the sixth, and held on to win, 12-11. Mike Murphy and Dave Alber did a fine pitching job for the Chelsea "C" team which was also sparked by fine performances from Craig Coltre, Tommy Boylan, Randy Guenther and Joe Sprague.

Chelsea "C" also defeated a strong Dexter team, 14 to 9, in a Tuesday night game. Chelsea scored seven times in the fifth inning to break a 7-7 deadlock.

A good job of relief pitching was done by Dave Alber, and timely hits were collected by Bill Ramsey, Randy Guenther and Craig Coltre.

Chelsea "C" lost to the Manchester "A" team, 13 to 6 in a Thursday night game played in Manchester. Chelsea got off to a 5 to 0 lead, but lost their lead due to walks, errors and a few timely hits by Manchester. Chelsea collected only two hits during the evening.

BABE RUTH LEAGUE FINAL STANDINGS

	W	L
Manchester "A"	9	0
Chelsea "A"	7	2
Chelsea "C"	4	6
Chelsea "B"	4	6
Manchester "B"	3	7
Dexter "B"	2	8

LAST WEEK'S RESULTS

Manchester "A", 8; Chelsea "A", 3.
Chelsea "C", 5; Manchester "B", 4.
Dexter, 10; Chelsea "A", 4.
Chelsea "C", 12; Chelsea "B", 11.
Manchester "A", 8; Chelsea "B", 2.
Chelsea "C", 14; Dexter, 9.
Chelsea "A", 9; Manchester "B", 4.
Manchester "A", 13; Chelsea "C", 6.
Chelsea "A", 7; Chelsea "B", 3.

Willow Creek Ladies Golf League Standings as of Aug. 3

	W	L
Brown's Drug Store	27	13
Town Crier Scoops	21½	18½
Dana Powers	20½	19½
Barber's Borden Belles	18	22
Spadafore's		
Ding-A-Lings	16½	23½
Hickory Ridge	10½	29½
18 putts or less: Dorene White		
Madge Freymuth 17; Grace Collins 17.		

How's this for a definition? College-bred—a four-year loaf on father's dough.

BOWL for the fun of it...

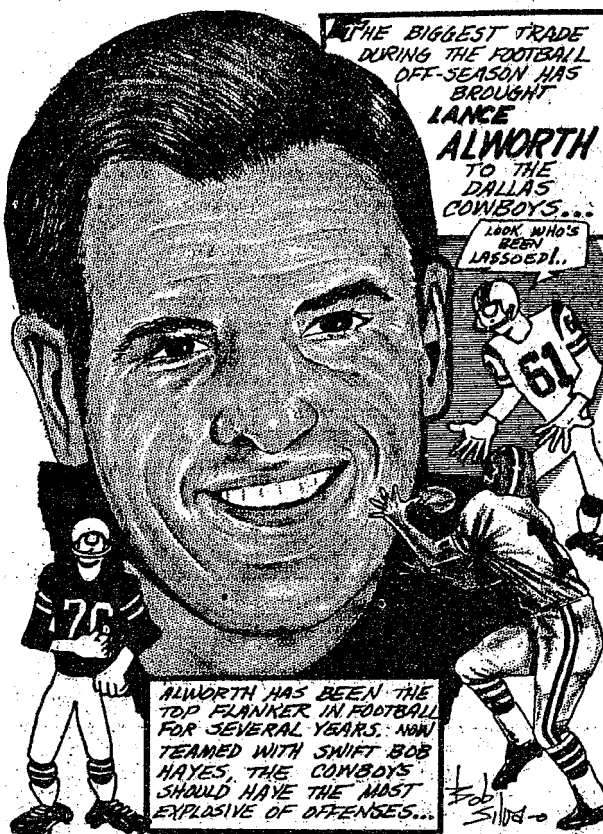


Having Fun Lately? Bowling Is a Ball!

Put some fun in your life . . . Bowl for laughter and health at our modern, well-equipped lanes with rarely a wait. Bring the gang down!

CHELSEA LANES
1180 M-52 Phone GR 5-8141

SPORTS CORNER



ALWORTH HAS BEEN THE TOP PLANKER IN FOOTBALL FOR SEVERAL YEARS. NOW TEAMED WITH SHIRT BOB HAYES, THE COWBOYS SHOULD HAVE THE MOST EXPLOSIVE OF OFFENSES...

District Court Proceedings

In 14th District court last week, Alice Hargett, Saline, pled guilty to a charge of making an improper left turn, and to having no operator's license. She paid \$30 fine and costs for each charge.

Eugene Alber, Ypsilanti, pled guilty to driving with a suspended license. He was ordered to pay \$50 fine and costs and to spend five days on the Saline Police Department work program. A 30-day jail sentence was suspended.

Willard Notestine, Ann Arbor, pled guilty to driving under the influence of liquor. Bond was set at \$100. He will be sentenced Sept. 13 in Chelsea.

Carl Ostrander, Chelsea, was found guilty of speeding. He paid \$25 fine and costs.

Jack Farrington, Flint, pled guilty to having no operator's license. He was ordered to pay \$16 fine and costs.

George William Marks, Grass Lake, pled guilty to having no Michigan operator's license. He paid \$25 fine and costs.

Cecil Arnold, Manchester, pled guilty to having junk in his yard in violation of a village ordinance. He was ordered to pay \$50 fine and costs. A 30-day jail sentence will be suspended if the junk is cleaned up within two weeks.

Roger Crist, Gregory, was found guilty of driving on a revoked license. He was ordered to pay \$75 fine and costs within two weeks and to spend seven days on the Dexter work program. He was given 45 days probation.

Gary Luckhardt, Ann Arbor, and Joseph Kidd, Manchester, were found guilty of possessing stolen property valued at less than \$100. Both were ordered to pay \$50 fine and costs, and both were given six months probation.

Larry E. Vansteenis, Ham burg, was found guilty of careless driving. He will be sentenced Aug. 27 in Dexter.

Donald Milbocker was found guilty of having improper license plates. He paid \$16 fine and costs.

Terry DeLong, Whitmore Lake, pled guilty to creating a disturbance. He was ordered to pay \$35 fine and costs.

Even with the use of modern pesticides, the average annual loss of crop and livestock production in the U.S. caused by major pests is 33 percent of the potential or over \$14 billion each year. Without pesticides, total crop and livestock production would be cut another 30 percent.

Now that we've had a taste of it, summer doesn't seem all we thought it was—last winter.

Little League All-Stars Defeat Champion Rockwell Team

In the final Little League game of the season, the Little League champs, North American Rockwell, lost to the Little League All-Stars, 16 to 12.

The All-Stars jumped to a 3-0 lead in the top of the first inning on three walks, and a single by Steve Dresch. They picked up three more in the second on three walks, and a single by Dale Schoenberg.

In the top of the third the All-Stars went ahead, 9-0, on hits by Mike Foster and Dale Schoenberg. The champs got on the score board in the bottom of the third, scoring three runs on hits by Doug Craft and John Adams.

In the sixth, the All-Stars scored six runs on hits by Mike Foster, Matt Heydlauff, Jeff Sweet, and a home-run by Anthony Houle, making the score 16 to 5.

The champs came back with three runs in the sixth-inning on hits by Bob Fisher and Randy Sweeney. They got four more in the seventh on hits by Don Morrison and Randy Sweeney.

With the score 16 to 12 in the bottom of the seventh, the trailing champs had two men out and the bases loaded, but a strike-out ended the rally and the game.

The final score remained 16 to 12.

Little League coaches this year were Gary Cattell, George Heydlauff, John Check, Harold Dresch, and Merle Leach.

A dairy cow producing 11,000 pounds of milk a year (about 5,000 quarts) consumes an average of 45 tons of feed—3 tons of feed and 37 tons of water. That's 247

LITTLE LEAGUE FINAL STANDINGS	
	W L
North American Rockwell	6 2
Chelsea Jaycees	4 4
Chelsea State Bank	4 4
Frigid Products	3 5
Dana	3 5

LAST WEEK'S RESULTS

Chelsea State Bank, 14; North American Rockwell, 11.
Chelsea Jaycees, 8; Frigid Products, 3.
North American Rockwell, 11; Dana, 6.
Chelsea Jaycees, 4; Chelsea State Bank, 3.
Dana, 11; Frigid Products, 6.
North American Rockwell, 16; Chelsea Jaycees, 2.
North American Rockwell, 13; Frigid Products, 3.
Chelsea State Bank, 20; Dana, 13.
Chelsea State Bank, 11; Frigid Products, 6.
Dana, 25; Chelsea Jaycees, 5.
North American Rockwell, 5; Chelsea State Bank, 4.
Frigid Products, 23; Dana, 6.
Chelsea State Bank, 9; Chelsea Jaycees, 3.

GOOD AND BAD

Men may not consult physicians about overweight problems so often as women, but they follow prescribed diets more faithfully, according to a survey of more than 15,000 physicians.

EARLY SERVICE

In 1976 the United States mail services operated only 28 post offices and half of them were in Massachusetts. Postal clerks received board with the postmaster as part of their pay.

THE LANSING REPORT

FROM
senator
GIL BURSLEY



I am deeply disturbed by a new development of the past week in Lansing.

With the question of state school aid for 1971-72 still unsettled the threat of further slashes in this vital area has arisen through new recommendations from the Governor's budget office to the Senate Committee on Appropriations.

As chairman of the Senate Education Committee which maintains the closest degree of contact with educators and school officials throughout the state it is my firm belief that the level of state expenditures recommended by the Education Committee would have provided an adequate but minimum level of state assistance to our schools.

Our Senate Education Committee recommendations were made with clear recognition of the tight fiscal situation confronting the state and were more than \$4 million below the agreed-upon level of state school aid that evolved from regular meetings of 12 legislative leaders with the Governor.

That agreed-upon level of state aid to school was widely publicized. A majority of members of both houses of the legislature supported an increase in the state in-

come tax with the promise in mind that this level of school aid would be funded.

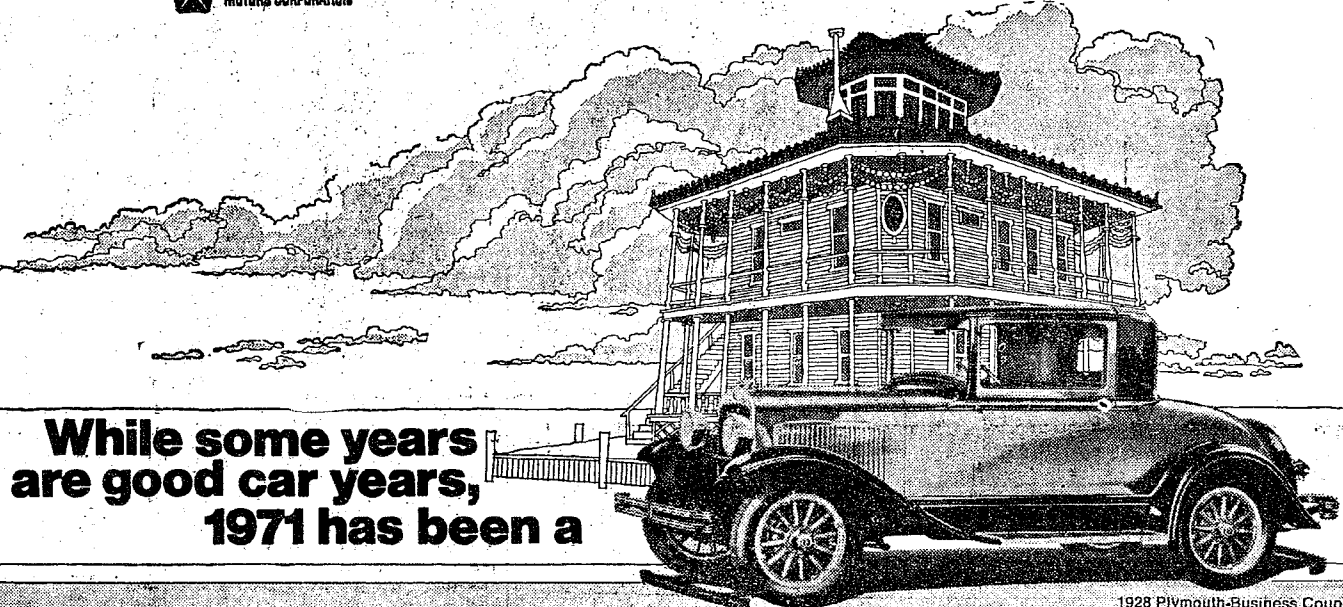
For new cuts estimated roughly at \$29 million to be proposed at this late date may well be termed a breaking of faith that has created serious questions of credibility as to the communications that have existed between the executive and legislative branches of state government.

I will of course continue my determined struggle to see an adequate state school aid bill enacted for 1971-72. This is an obligation and a responsibility clearly spelled out in the Michigan Constitution which should transcend all considerations of partisanship or regionalism.

I can appreciate the fact that budget recommendations formal or informal are always subject to later revision in light of fiscal developments.

But the schools of our state have already borne the brunt of the emergency cutbacks in state spending that were necessitated earlier this year. For new economies to be recommended at this late date to legislators who supported a tax increase with the clear understanding that their schools would receive adequate support is unthinkable.

AUTHORIZED DEALERS CHRYSLER MOTORS CORPORATION



While some years are good car years, 1971 has been a

VINTAGE YEAR FOR PLYMOUTH DUSTER

ONE OF OUR BEST YEARS.

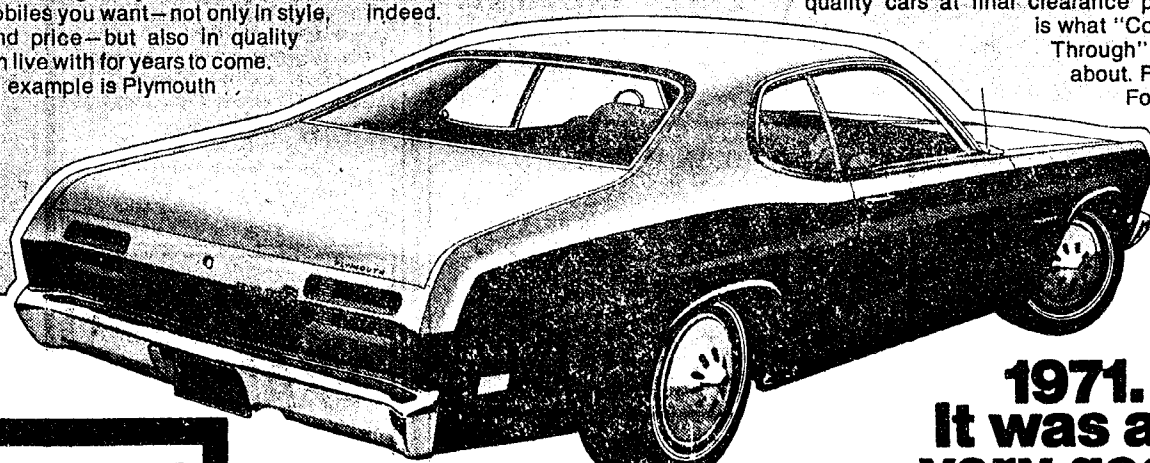
It takes something special to come up with a Vintage Year. But that's what '71 has been for Chrysler-Plymouth. Everything—from drawing board to final assembly—has come together in great fashion. We like to think our slogan "Coming Through" had a lot to do with it, because it's more than a phrase, it's a pledge, a dedication to one purpose: To come through for you with the kind of automobiles you want—not only in style, size and price—but also in quality you can live with for years to come. A good example is Plymouth Duster.

ECONOMY CAN BE BEAUTIFUL, TOO.

Plymouth Duster is a rare breed of economy car. Rare, because in this day of rising interest in little cars, Duster comes through small enough for easy handling and good gas mileage, big enough for families with baggage. Now add Duster's high resale value (a leader in its class, along with other Plymouth compacts), and you have a rare breed of economy car indeed.

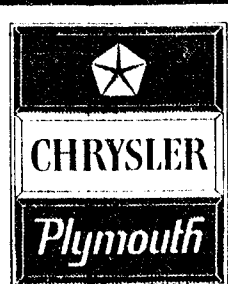
NOW, A GREAT SELECTION COMING THROUGH FINAL CLEARANCE PRICED.

While some years are good car years, '71 has been a Vintage Year for Chrysler-Plymouth. Quality shines and shows in every line. A drive in a Plymouth Duster or Satellite, Plymouth Fury, Barracuda or Chrysler, will prove how our '71 models have come through. Check our great selection. We think you'll agree: quality cars at final clearance prices is what "Coming Through" is all about. For us. For you.



Duster 2-Door Coupe

1971.
It was a
very good
year.



Coming Through.

G. A. SALES & SERVICE • 1185 Manchester Road



SUCCESSOR TO THE AUTOMATIC WATER SOFTENER

THE REYNOLDS SOFT-SENSOR

THE WATER CONDITIONER THAT HAS A MIND OF ITS OWN FOR SOFT, RUST-FREE WATER

THAT'S RIGHT! Every night the Soft-Sensor "takes its own pulse." If it needs recharging, it recharges itself. . . . If not, it checks itself the next night.

The Soft-Sensor recharges itself ONLY when it needs it, and always when it needs it.

Other brands of water softeners can often be converted to the Soft-Sensor. Call our direct factory line without charge 1-800-552-7717 or call Ann Arbor 662-5676

The Reynolds Soft-Sensor is a product of:
REYNOLDS WATER CONDITIONING CO.
12100 Cloverdale Avenue / Detroit, Michigan 48204

Serving Washtenaw County with quality water conditioning products for 40 years

John Milford Named to New State GOP Youth Advisory Council

William F. McLaughlin, GOP chairman, has announced the appointment of John Milford to the newly created Youth Advisory Council of the Michigan Republican State Central Committee to represent the Second Congressional District. The council is designed to implement the political involvement of the voters under the 26th Amendment just adopted for the United States Constitution.

Milford is currently serving as secretary of the Ypsilanti City Republican Committee. He was the youngest person ever elected in office of that committee when he was named its vice-chairman in 1968. In the 1970 general election campaign he served on the staff of Congressman Marvin L. (R) of Ann Arbor. He headed the Ypsilanti Area Teenage Republican Club for two years and in 1967 was selected as one of the 10 most outstanding TARS in the state of Michigan.

Milford is a senior at Eastern Michigan University where he is now chairman of the Disciplinary Review Board and a former member of the Student Senate for two years.

Mow Newly Seeded Lawn Only After Grass Is 2 Inches High

East Lansing—A newly seeded or sodded lawn should be mowed when the grass is 2½ to 3 inches high, advises Dr. James Beard, Michigan State University turf-grass researcher.

The best time to seed a lawn is Aug. 15 to Sept. 1. The new grass should be cut 1½ to 2 inches, says Beard. Whether you leave or remove the clippings depends on the quantity.

Apply a light application of soluble nitrogen, such as ammonium nitrate or urea (1½ pounds of actual nitrogen per 1,000 square feet of lawn) when the young seedlings have reached a height of 1½ inches, says Beard.



CHECKING IN: Chuck Haas, of the Tens 'n' Teens 4-H Horse Club, adds Cosmic Re, owned by Art Snyder at Sugar Lane Farms, to his horse census. Seventeen 4-H Horse clubs in Washtenaw county are taking a head count of the horse population preparatory to ordering vaccine against the epidemic of Venezuelan Equine Encephalomyelitis (VEE) should it appear in Michigan. Horse owners who have not been reached by these census takers should contact the leader nearest them.

4-H Clubs Undertaking Horse Census for Fight on Disease

If you live in Washtenaw county, own a horse or several, and you have not been contacted by the 4-H Horse Club members this week, please read on.

4-H horse enthusiasts have been delegated to take a census of all the horses in the Washtenaw county area so that vaccine for Venezuelan Equine Encephalomyelitis may be prepared, should the dread killer of horses make its appearance in Michigan.

Number and location of all horses is essential to prepare to combat VEE, and 4-H leaders and their young horsemen have been kind enough to take on the job.

If you have not been contacted by one of the census takers, please get in touch with the area captain for your district listed below:

Webster Township—James Love, 426-4307.

Dexter Township, Western Northfield—Ben Conklin, 426-4854.

Scio Township—Mrs. D. L. Hinerman, 662-6416.

Freedom, Sharon, Manchester—Clinton Fisk, 428-9341.

Lodi and Ann Arbor south of the river—Barbara Miller, NO8-8472.

Saline and York—Robert Starling, 429-7777.

Lyndon and Sylvan—Lloyd Tennant, 378-3512.

Lima, Bridgewater—Duane G. Elliott, 439-2006.

Fire Investigating Team Formed By Police Agencies

A new coalition of officers representing several law enforcement agencies both within and outside

of Washtenaw county is being formed to investigate "fires of a questionable nature," according to Detective Sgt. Harold Kerr of the Washtenaw County Sheriff's Department.

The group, which will have its first meeting late this week, will include members from the Washtenaw County and Livingston County Sheriff's Departments, the Brighton and Ypsilanti State Police Posts, and possibly the Jackson State Police Post.

The group is being formed, Detective Kerr said, as a "cumulative knowledge-sharing effort."

Glen Campbell Will Be Appearing At State Fair

Glen Campbell, the super-star of Country Music, will kick off the 1971 Michigan State Fair Friday and Saturday, Aug. 27-28, Fair Manager E. J. Keirns announced today.

Campbell will perform in the Grandstand twice daily at 5:30 p.m. and 8:30 p.m. Fairgoers may attend his shows free of charge after paying the gate admission to the fair grounds.

"We are proud to present Glen Campbell to the people of Michigan," Keirns said. "He is one of the all-time great entertainers."

Campbell has won numerous awards including 10 Gold Records and four Grammy Awards. He hosts his own national television program "The Goodtime Hour."

The 1971 Michigan State Fair has a power-packed program, including talent, exhibits, parades and rides, planned every day, Aug. 27 through Sept. 12.

Kerr added that work is being done by the various departments to arrive at a basis of comparison in the investigation of the fires.

Members of the coalition will pool information from both past and future investigations concerning fires in which arson has definitely been a factor, as well as fires caused by questionable factors.

The various officers will work together for an undetermined length of time. Kerr added that the Chelsea, Dexter and Manchester Fire Departments will definitely be included in the coalition "on a working level."

Investigations into a number of the fires in the north and south-western part of the county have produced suspects, Kerr said. "I have made an assumption, due to certain factors that they were set by the same group."

The latest in the rash of fires in which arson is suspected as the cause occurred at the Russell Ferry farm, 20624 Waterloo Rd., last Thursday night.

The fire was discovered in a barn at the corner of Waterloo and Werkner Rds., in Lyndon Township at approximately 10:30 p.m.

The barn and a tractor-loader, corn planter, two snowmobiles and grain and hay were lost in the blaze. Chelsea firemen fought the fire for three hours. No injuries were reported.

Earlier in the day, fire destroyed two buildings, equipment, hay and grain at the Charles Trinkle dairy farm, 9631 Trinkle Rd. The Trinkle farm fire was discovered at about 4:10 p.m. That farm is only a few miles south-east of the Ferry farm. Arson, however, is not suspected in this fire.

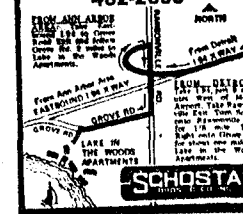
Buy food for as long a period of time as possible (usually a week) and take the time to store it properly once you get it home. Perishables, such as dairy products, should be purchased more often. But, remember, it takes concentration to go to the store for milk and walk out with just milk.

FREE SAIL BOAT



WITH EVERY 2 BEDROOM LAKE IN THE WOODS APT. Yours to keep. Sell it on our 6½ mile beautiful blue lake. Fish, Sail, Waterski, Regulation Golf Course, Tennis Courts, Beach House, Swimming Pools, Saunas, Marina, Lakeside Patisserie, Clubhouse. Wow! What a life!

LAKE IN THE WOODS APARTMENTS 482-2800



+ Services in Our Churches +

ST. PAUL UNITED CHURCH OF CHRIST
The Rev. Warner Siebert, Pastor
Sunday, Aug. 15—
9:00 a.m.—Family worship. Sermon title: "Amazing Tragedy."
Kanten baptism.
9:20 a.m.—Church school.

ST. THOMAS EVANGELICAL LUTHERAN
The Rev. Daniel L. Mattson, Pastor
Sunday, Aug. 15—
9:15 a.m.—Sunday school and bible class.
10:30 a.m.—Communion service.
Monday, Aug. 16
7:30 p.m.—Sunday school teachers.

Tuesday, Aug. 17—
10:00 a.m.—Ladies' Bible study.

NORTH SHARON COMMUNITY BIBLE CHURCH
Sylvan and Washburn Rds.
The Rev. William Enslen, Pastor
Every Sunday—
10:00 a.m.—Sunday school.
11:00 a.m.—Worship service.
6:30 p.m.—Young People's service.

Every Wednesday—
7:30 p.m.—Prayer meeting.

ZION LUTHERAN CHURCH
Corner of Fletcher, Waters Rds. (Rogers Corners)
The Rev. John R. Morris, Pastor
Every Sunday—
Summer worship schedule.
8:30 a.m.—Sunday school.
9:30 a.m.—Worship.

CHELSEA BAPTIST CHURCH
337 Wilkinson
The Rev. James Stacey, Pastor
Every Sunday—
10:00 a.m.—Sunday school.
11:00 a.m.—Worship service.
Nursery care available during all services.

6:00 p.m.—Junior and Senior Baptist Youth Fellowship.
7:00 p.m.—Evening worship.
Every Wednesday—
7:30 p.m.—Bible study and prayer meeting.

FIRST ASSEMBLY OF GOD CHURCH
The Rev. Thode B. Thodeson, Pastor
Every Sunday—
9:45 a.m.—Sunday school.
11:00 a.m.—Worship service.
7:00 p.m.—Evangelistic service.

Every Wednesday—
7:00 p.m.—Midweek services.

FIRST CHURCH OF CHRIST, SCIENTIST
1883 Washtenaw Ave., Ann Arbor
Sunday, Aug. 15—
10:30 a.m.—Sunday school.
10:30 a.m.—Morning service.
Lesson-sermon: "Soul."

ST. JOHN'S EVANGELICAL AND REFORMED CHURCH
(United Church of Christ)
Francisco
The Rev. Robert Townley
Every Sunday—
10:00 a.m.—Worship service.
10:20 a.m.—Sunday school.

NORTH LAKE UNITED METHODIST CHURCH
The Rev. Harry Weeks, Pastor
Every Sunday—
9:30 a.m.—Worship service.
10:30 a.m.—Sunday school.

OUR SAVIOR LUTHERAN CHURCH
Rebekah Hall, 1194 M-52
The Rev. William H. Keller, Pastor
Every Sunday—
9:00 a.m.—Worship service.

FIRST UNITED METHODIST CHURCH
The Rev. Clive Dickens, Pastor
Every Sunday—
10:00 a.m.—Church service.

CONGREGATIONAL CHURCH
(United Church of Christ)
The Rev. Daniel Kellin, Pastor
Every Sunday—
10:00 a.m.—Church school.
10:00 a.m.—Morning worship.

ST. BARNABAS EPISCOPAL CHURCH
20500 Old US-12
The Rev. C. Walton Fitch, Vicar
Telephone 426-8815
Every Sunday—
9:15 a.m.—Holy Communion, first, third, and fifth Sundays.
9:15 a.m.—Morning Prayer, second and fourth Sundays.

GREGORY BAPTIST CHURCH
The Rev. Grant Lapham, Pastor
Every Sunday—
10:00 a.m.—Worship service.
11:15 a.m.—Church school.
6:30 p.m.—Baptist Youth Fellowship.

7:30 p.m.—Evening worship service.

SALEM GROVE UNITED METHODIST CHURCH
The Rev. Harry Weeks, Pastor
Every Sunday—
10:00 a.m.—Sunday school.
11:00 a.m.—Worship service.

CHURCH OF CHRIST
13661 Old US-12, East
Lionel S. Burger, Minister
Every Sunday—
10:00 a.m.—Church school.
11:00 a.m.—Worship service.
6:00 p.m.—Worship service.
Every Wednesday—
7:30 p.m.—Bible Study.

FIRST UNITED PRESBYTERIAN CHURCH
Unadilla
The Rev. T. H. Liang
Every Sunday—
9:45 a.m.—Sunday school.
11:00 a.m.—Worship service.
Every Tuesday—
8:00 p.m.—Choir practice.

CHELSEA MEDICAL CENTER
Every Wednesday—
1:30 p.m.—Worship service.

ST. MAKY CATHOLIC CHURCH
The Rev. F. Francis Wahowiak
Every Saturday—
7:30 p.m.—Mass.
Every Sunday—
Masses at 6:30 a.m., 8:00 a.m., 10:00 a.m., and 11:30 a.m.

IMMANUEL BIBLE CHURCH
145 E. Summit St.
Gayle DeSmyther, Lay Leader
Every Sunday—
9:45 a.m.—Sunday school, nursery provided.
11:00 a.m.—Morning worship, nursery provided.
7:00 p.m.—Evening service
Every Wednesday—
Family hour, prayer meeting and Bible study.

BETHEL EVANGELICAL AND REFORMED CHURCH
(United Church of Christ)
Freedom Township
The Rev. Roman A. Reineck
Every Sunday—
10:00 a.m.—Worship.
10:00 a.m.—Sunday school.

FIRST UNITED METHODIST CHURCH OF WATERLOO
Parks and Territorial Rds.
Mrs. Altha Barnes, Pastor
Every Sunday—
9:15 a.m.—Morning worship.
10:15 a.m.—Sunday school.

ST. JOHN'S EVANGELICAL AND REFORMED CHURCH
(United Church of Christ)
Rogers Corners
The Rev. David J. Kleis
Every Sunday—
9:30 a.m.—Sunday school.
10:30 a.m.—Morning worship.

ST. JACOB EVANGELICAL LUTHERAN CHURCH
12501 Rietmiller Rd., Grass Lake
The Rev. Andrew Bloom, Pastor
Every Sunday—
9:00 a.m.—Sunday school.
10:15 a.m.—Divine services.

VILLAGE UNITED METHODIST CHURCH OF WATERLOO
8117 Washington St.
Mrs. Altha Barnes, pastor
Every Sunday—
10:00 a.m.—Sunday school.
11:15 a.m.—Morning worship.

LOY'S TV CENTER

Authorized Sales and Service for
ADMIRAL - MOTOROLA - PHILCO
We Service Other Leading Brands
REPAIRS - SALES

COLOR WINEGARD ANTENNA SALES & SERVICE

TWO LOCATIONS TO SERVE YOU

769-0198 or 769-4469

512 N. MAPLE AT DEXTER, ANN ARBOR

449-4454

10 JENNINGS RD. AT POST OFFICE, WHITMORE LAKE

Your Michigan Bankard or Master Charge Welcome Here

RADIO DISPATCHED TRUCKS
We're Just Minutes from You!



If winter made you decide to replace your heating system...summer's the time to do

Your Edison-approved contractor isn't bogged down with last-minute calls for service. So you'll get prompt attention and fast installation of an electric heating system. And the insulation that goes with an approved installation will give you the immediate benefit of a cooler home for the rest of the summer.

Edison, 160 Service Building, 2000 Third, Detroit, Mich. 48226

() Yes. We'd like to talk to an Edison-approved dealer.

() Please send us Electric Heat literature #110.

NAME _____

ADDRESS _____

CITY _____ ZIP _____ PHONE _____

Edison

POOL SALE

ALL SWIMMING POOLS DRASTICALLY REDUCED

550 ROUND PACKAGES!

5" Wide Post
3" Wide Post
Leave Up All Year

15' Complete

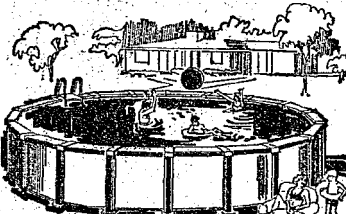
\$285

18' Complete

\$325

24' Complete

\$399



All Pools include
¾ H.P. Filter, Ladder, Vacuum,
Automatic Skimmer,
Test Kit.
"Complete"

Viscount Pools

The Pool People

770 ROUND PACKAGES!

7" Wide Top
5" Wide Post
Leave Up All Year

18' Complete

\$375

24' Complete

\$449

27' Complete

\$525

LIVONIA
(near Wayne Rd.)
34750 PLYMOUTH RD

ANN ARBOR
(across from Westlake)
2450 W. STADIUM
Daily 10-9 Sat. 9-6 Sun. 11-6

YPSILANTI
(across from Chumley)
1123 E. MICH. AVE.
Daily 10-9 Sat. 9-6 Sun. 11-6

CANADA
Call 948-2853

2 FOR 1 RUG CLEANING

Pay regular Low rate on largest rug—we clean the second one FREE!

Act Now! Limited time only. **SALE**

Palace Quality
RUG CLEANING

FREE PICK-UP/DELIVERY
call 933-0700
or Ann Arbor 663-4185

Child-A-Month Plan Now Has 22 Chelsea Members Enrolled

The Child-a-Month Club, a program which seeks families for older or handicapped children waiting in foster homes and institutions for adoption, has 22 members, including both organizations and individuals in Chelsea.

The program is operated by Spaulding for Children, an agency specializing in the placement of children whom regular adoption agencies have difficulty in placing—children with special problems such as age, or a physical, educational or emotional handicap.

Spaulding for Children believes that there is a home for every child, and started the Child-a-Month Club to assist them in finding those families.

Members of the club donate \$10 per month to support the cost of locating families, processing the legal work, the family, and providing follow-up services. They receive monthly bulletins describing the child they have helped to place.

There are now 156 members of the club in the state, but there

are 8,000 children awaiting the type of service Spaulding for Children provides.

One Chelsea mother described her reasons for participating in the program. "We wanted to help," she said. "We thought of Save the Children or the Foster Parents plan, but we wanted to help children near us. We look forward each month to hearing about a child we have helped."

BIBLE VERSE TO STUDY

"By this my Father glorified, that you bear much fruit, and so prove to be my disciples."

1. Who is the author of this statement?
2. To whom was he speaking?
3. What was the occasion of the statement?
4. Where may this verse be found?

(Answers elsewhere on this page)



LITTLE LEAGUE ALL-STARS — Selected from the second, third, fourth and fifth place Little League teams by their managers are (left to right) front row: Dale Schoenberg, Steve Dresch, Jeff Sweet, Steve Pennington. Middle row: Tony Wood-

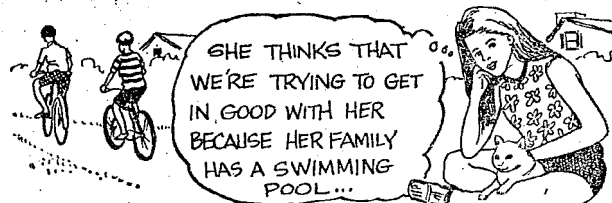
ward, Brian McGibney, Anthony Houle, Gerald Benjamin, Todd Weber, John Daniels. Top row: Ray Stoddard, Matt Heydlauff, Mark Smith, Mike Foster, Dean Thompson, Jeff Eder.



LITTLE LEAGUE CHAMPS—Members of the North American Rockwell team which captured the top spot in Little League play with a 6-2 record are (left to right), front row: Mike Robbins, Ken Mshar, Jamie Boyer, Gary Cattell (coach), Doug

Craft. Middle row: Bob Fischer, Dale Headrick, Don Morrison, Randy Sweeny, Mark Bucholz, Don Nadeau. Top row: Jim Alexander, Todd Headrick, Tom Young, Kirk Steinaway, John Adams. Missing from the photo is Phil Steinhauer.

For And About Teenagers



THE WEEK'S LETTER:

We are thirteen years old and have a problem. There is one girl on our block who is nice, but isn't active. She doesn't have many friends. We've tried to make friends with her. Every time we do this, it seems that we are just trying to get in good with her because her family has a swimming pool. Could you give us some advice?"

OUR REPLY: If you have tried to make friends with her during wintertime, she should know that you aren't just interested in swimming. Some people who do not appear to be friendly with neighbors may have plenty of friends who live elsewhere in town. If your neighbor isn't friendly, she might have other interests that

keep her occupied—or she may just not want to be friendly. Your best course is not a big campaign—but to maintain a friendly attitude whenever you happen to meet.

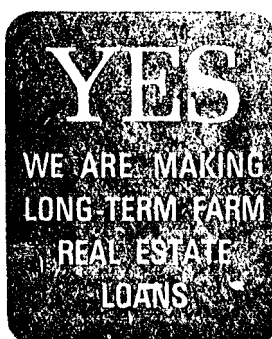
If you have a teen-age problem you want to have discussed or an observation to make, address your letter to "For and About Teen-Agers," Community and Suburban Press Service, in care of this newspaper.

Federal Highway Use Tax Return Due Soon

Detroit — Owners of large trucks, truck-tractors, or buses may be required to file a federal highway use tax return, Form 2290, by Aug. 31, Thomas A. Cardeza, District Director of Internal Revenue in Michigan said today.

The tax year begins July 1 and runs through the following June 30. Subsequent returns may be required for vehicles used for the first time on public highways after July.

IRS Publication 349, "Federal Use Tax on Trucks, Truck-tractors, and Buses," provides detailed information on this subject and may be obtained by dropping a post card to your district Director, Internal Revenue Service, Detroit 48226.



SEE US



P. O. Box 1006
Ph. 769-2411 3645 Jackson Rd.
Ann Arbor, Mich. 48103

Annual Mackinac Bridge Walk Expected to Attract 20,000 Fans

The 14th annual Mackinac Bridge Walk on Labor Day morning led by Gov. William G. Milliken, starting at 7:30 a.m., is expected to attract between 16,000 and 20,000 participants.

The Mackinac Bridge, which is closed to pedestrian traffic except for Labor Day morning, is geared up for record 20,000 persons taking part in the traditional 4½ mile trek which began in 1958 with 65 members of the International Walkers Association led by then Gov. G. Mennen Williams.

For the past several years the Bridge Walk has attracted more than 15,000 persons, rain or shine. During election years it has become the focal point of political activity, with candidates for state and local offices participating in the Walk and greet walkers.

Vehicular traffic, both north-

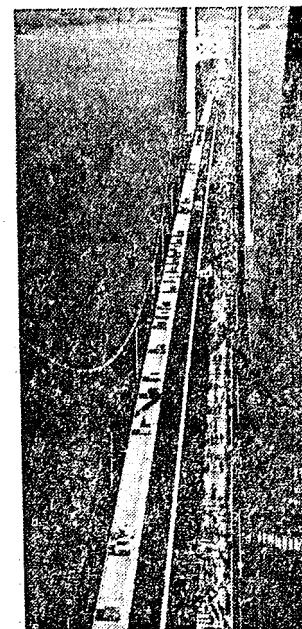
bound and southbound, is maintained during the Bridge Walk. The two east lanes are reserved for walkers. In past years, southbound traffic has experienced some delay. However, plans are going forward to eliminate the problem this year.

Prior to the general walk, which is not a race, the International Walkers Association will sponsor novice races across the Bridge for men and women, and boys and girls. Registration to participate in this event will be open at the Bridge Plaza (north side) prior to the commencement of these races, which will start at 7:10 a.m.

All walkers completing the trip are given certificates attesting to same. These certificates are numbered and keyed to prizes valued at more than \$1500 awarded by the merchants and the Chamber of Commerce of Mackinaw City.

Marching bands, boy scout troops, and community promotion groups are encouraged to participate in the Bridge Walk. However, running, jogging, roller skating, bicycling, anything but pure and simple strolling is prohibited during the General Bridge Walk.

Efforts to obtain buses to transport walkers from Mackinaw City to St. Ignace early on the morning of the Walk will be made, but it is strongly recommended that Bridge walkers make provision to be at the Bridge Plaza, north side, on the morning of the Walk without depending on the bus service, which at best is subject to unusual traffic congestion. Persons planning to walk the Bridge must start before 10 a.m.



A bird's-eye view of the Labor Day morning 4½ mile Mackinac Bridge Walk scheduled to start at 7:30 a.m. on September 6, 1971.

Bible Verse Answers . . .

1. Jesus.
2. To the eleven disciples.
3. After the Last Supper, while Jesus and the eleven were en route to the Garden of Gethsemane.
4. John 15:8.

CASUAL CLOTHES 'IN'
The designers of new clothes seem to feature casual clothes in their spring showings. Fabrics are washable or wrinkle free.



Friday and Saturday, Aug. 13-14

14 Cu. Ft.

Frost-Free Refrigerator

With Ice-Maker

Reg. \$339.95 **\$259⁹⁵**
NOW

FREEZERS

Choice of chest or upright style

Reg. \$199.95 **\$179⁹⁵**
NOW

BIG SAVINGS on LAWNMOWERS

And Other Summer Items

While They Last!

TIRES

Buy 1 at regular price
and get 2nd tire at

1/2 OFF

WESTERN AUTO

"The Family Store"

106 N. Main St.

Phone 475-4721



FRIDAY & SATURDAY, AUG. 13-14

If you are looking for

USEFUL BARGAINS

We have them!

POTS & PANS - SPORTING GOODS - CHINA

LAWN FERTILIZER - POWER LAWN EQUIPMENT

We Also Have a Chip & Dent Section

CHELSEA HARDWARE

110 S. MAIN ST.



PHONE GR 9-6311

Motor Vehicle Funds Being Distributed

Chelsea will receive \$11,720 of the county's \$614,293 share of the second quarter Motor Vehicle Highway fund collections being distributed by the State Highway Commission.

The village received \$10,679 for the second quarter last year.

All state gasoline and diesel fuel taxes and license plate fees go to the Motor Vehicle Highway Fund. The money is distributed to local areas after the cost of collections and other fixed costs are deducted.

Other area cities receiving funds include: Ann Arbor, which will receive \$305,473 as compared with \$223,312 last year; Dexter, \$5,295, compared with \$5,806; Pinckney, \$8,537, compared with \$8,422; Saline, \$12,794, compared with \$7,648; Grass Lake, \$4,502, compared with \$4,394; Manchester, \$6,541 compared with \$6,286; Milan, \$13,054, compared with \$12,293; and Ypsilanti, \$73,851, compared with \$57,347.

Jackson county will receive \$531,233 compared with last year's \$502,339. Last year Washtenaw county received \$577,291 during the comparable quarter.

Subscribe today to The Standard!



president names special investigators to keep public informed on new building's progress

These three members of our staff will be reporting to you periodically through this newspaper on the progress of our new building. They're going to peek, peer, probe and perceive as the new structure takes shape and report their findings without fear or favor. They'll note each nail, judge each joist, contemplate each conduit. Watch for their exciting reports!

Roy E. Weber
Roy Weber, President



SINCE 1890
The savings and loan specialists
Liberty at Division, West Stadium at Pauline,
Huron Parkway at Platt, Plymouth at Nixon.
ANN ARBOR FEDERAL SAVINGS
Member: Federal Home Loan Bank System • Federal Savings and Loan Insurance Corporation

Senior Citizen Activities

The first Tuesday of each month the senior citizens get together to entertain patients at the Chelsea Medical Center. On Tuesday, Aug. 3, a small group of senior citizens and patients met, and one patient at the center won a comb and a candy bar.

On Thursday, Aug. 5, the senior citizens enjoyed a social evening at the Korner House. Hostesses were Inez Rank and Bernice Schneider.

The birthday party will be held Aug. 19.

Birthday Party

A surprise birthday party honoring Mrs. Iva Keezer was held Sunday at the home of Mr. and Mrs. Mike Keezer. Children, grandchildren and great-grandchildren of Mrs. Keezer were present.

Included in the large party were Mr. and Mrs. Dale Keezer and Bob, Mr. and Mrs. Richard Keezer and family, Mr. and Mrs. Al Keezer, Mr. and Mrs. Loren Keezer and family, Mr. and Mrs. Chester Keezer, Mr. and Mrs. Gary Koch, Mr. and Mrs. Edward Keezer and family, and Mr. Bill Elder, all of Chelsea.

Also attending the party were guests and family members from East Lansing, Jackson and Manchester.

The Mike Keezer family presented his mother with a corsage and a birthday cake.



Mr. and Mrs. Ezra Lesser

Sunday Open House Will Honor Ezra Lessers on 50th Anniversary

Fifty years ago tomorrow, Miss Edna Mast became the bride of Ezra Lesser in a ceremony performed in the parsonage of St. Andrew's United Church of Christ.

At that time, of course, it was St. Andrew Evangelical church, and Mr. and Mrs. Alvin Lesser of Dexter attended the young couple as they repeated their vows before the Rev. Joseph Krueger.

On Sunday, the two couples will be together at St. Andrew's church, 50 years later, as the Ezra Lessers celebrate their golden wedding anniversary.

Since their marriage in 1921, the Ezra Lessers have lived in

the area and he has farmed on or near land at 89221 Island Lake Rd. He was born in Dexter township and has been active as a member of the Chelsea Community Fair Board and the Washtenaw County Farm Bureau and she has been a member of the St. Andrew's Women's Fellowship and the North Lake Extension Study group.

Mrs. Lesser was baptised and both were confirmed and married at St. Andrew's. She was born in Webster township and is a graduate of Dexter High school as well. Gardening is a favorite hobby for both of these anniversary people.

Hosts for the open house on Sunday, Aug. 15, from 2:30 to 5 p.m., will be the Lessers' children: their daughter, Mary, and her husband, Mr. and Mrs. Leonard Burmeister of Ann Arbor; daughter, Arlene, and her husband, the Merritt Honbaums of Chelsea; their sons and their wives, Mr. and Mrs. Norwin Lesser of 12651 Island Lake Rd., and Mr. and Mrs. Carl Lesser of 8521 Island Lake. There are nine grandchildren in the Lesser family who will join in Sunday's observance of 50 years of married life.

July Traffic Deaths Show Increase Over Last Year's Period

Michigan counted 216 traffic deaths in July, 19 more than charged to that month last year, State Police traffic division provisional figures showed Monday.

The July total was seven more than the average of 209 for that month in the five years, 1966-70. High mark for July was 231 recorded in 1967, low was 59 in wartime 1944.

July became the third month this year to show an increase in deaths compared with same months last year. June had 206 compared with 205 in 1970 and April had 145 compared with 141.

The accumulated death count for the first seven months this year is 1,172 which is 51, or about four percent less than the total of 1,223 in that period in 1970.

Subscribe today to The Standard!

Magic Mirror Beauty Salon

Open Monday thru Friday
9 a.m. to 9 p.m.
Saturday, 8 a.m. to 3 p.m.

PHONE 665-0816

An Engaging Suggestion



GOTHAM \$400
ALSO \$150 TO 1900



LEK \$220
WEDDING RING 100

REGISTERED
Keepsake
DIAMOND RINGS

Choose Keepsake... the engagement ring with a perfect diamond... guaranteed, registered and protected against loss from the setting for one full year. Come in soon and see our selection.

WINANS JEWELRY

Carolyn Buckingham, R. Bollinger Wed Friday at St. Mary Church

Carolyn Marie Buckingham became the bride of Ronald Bollinger in a ceremony performed July 30 in St. Mary Catholic church by the Rev. Fr. Francis B. Wahowiak. The bride is the daughter of Mr. and Mrs. Raymond Buckingham, 760 N. Main. The bridegroom's parents are Mr. and Mrs. Lee Bollinger, 2311 Peckins Rd.

For her wedding, Carolyn chose a camelot silhouette gown of white organza and peau d'ange lace embellished with pink velvet ribbon. She carried a cascade bouquet of white roses.

Miss Vickie Clemons of Dexter was the maid of honor. She wore a long-sleeved, empire-waisted gown of pink voile decorated with white flowers. She carried a bouquet of pink roses and baby's breath.

Bridesmaids were Miss Raylene Buckingham and Mrs. Charles Montgomery of Chelsea, Miss Rebecca Dean, Flint, and Miss Patricia Hergert, Grass Lake. They also wore empire waisted, pink voile gowns, and carried pink and white rose bouquets accented with baby's breath.

Twins Jaime and Jimmy Katski, of New Boston, served as flower girl and ring bearer. Best man was Kenneth Bollinger of Dexter.

Ushers were Randy Buckingham, brother of the bride, Neil Bollinger, brother of the bridegroom, Charles Montgomery and Ernest Hinderer.

For her daughter's wedding Mrs. Buckingham chose an aqua knit dress with lace trim. Mrs. Bollinger wore a champagne-colored dress with matching lace coat.

A reception following the wedding was held at the Stockbridge VFW Hall.

After a wedding trip to the Upper Peninsula, the new Mr. and Mrs. Bollinger will make their home at 332 1/2 Jackson St.



Mrs. Ronald Bollinger

Servicemen's Corner

Capt Daryl Keezer Now Stationed at Forbes AFB, Kansas

Topeka, Kan. — U.S. Air Force Captain Daryl B. Keezer, son of Mr. and Mrs. Elwood B. Keezer, 410 McKinley St., Chelsea, has arrived for duty at Forbes AFB, Kan.

Captain Keezer, a navigator, is in a unit of the Tactical Air Command which provides combat units for air support of U.S. ground forces. He previously served at Ching Chuan Kang AB, Taiwan.

The captain was commissioned in 1965 upon graduation from Officer Training School, Lackland AFB, Tex.

A 1961 graduate of Chelsea High school, he received his BS degree in engineering science in 1964 from Oakland University, Rochester, Mich.

The captain's wife, Lynn, is the daughter of Mr. and Mrs. Charles R. Heard, 18340 Rainbow Dr., Gregory, Mich.

Pfc. Larry Sanderson Completes Army Vehicle Mechanic Course

Ft. Knox, Ky.—Army Private First Class Larry J. Sanderson, 25, son of Mr. and Mrs. Carl Sanderson, 750 N. Main, Chelsea, Mich., recently completed an eight-week tracked vehicle mechanic course at Ft. Knox, Ky.

During the course, he was trained to repair engines, transmissions, and the fuel, electrical and hydraulic systems of the army's tracked vehicles. He also learned to perform recovery operations for abandoned, damaged, disabled or mired vehicles.

"War involves in its progress such a train of unforeseen and un-supposed circumstances that no human wisdom can calculate the end. It has but one thing certain, and that is to increase taxes."

—Thomas Paine 1797-1809

SING-ALONG MUSIC at INVERNESS INN NORTH LAKE

Saturday Nights - 9:30 p.m. to 1:30 a.m.

Music By

LEO WARBOY and the Chippewa Cowboys

YOUR FAVORITE SANDWICHES
SHRIMP, CHICKEN & FISH DINNERS
BEER - WINE - LIQUOR

VILLAGE BEAUTY SALON

LORETTA PANNONE, Owner-Operator
CINDY - EULA - MARGE - ARLENE

107 N. MAIN

PHONE 475-5421

OPEN MONDAY THRU SATURDAY

Evenings, Wednesday and Thursday

OPENING

Manchester's Newest Beauty Shop
RIVERVIEW BEAUTY SHOP

JACKIE (JOHNSON) WHITAKER, Manager
CHRISTINE WALKOWE

OPENING SPECIALS:

PERMS, Reg. \$15, Now \$10.50
SHAMPOO, SET & CUT \$ 5.00

Ph. 428-8149, MANCHESTER
Right Next to Dairy Queen



COME ON IN, SAVE!
Sidewalk Sales
Downstairs

Tailfeather Boutique

105 N. Main

Chelsea

Sidewalk Sale

FRIDAY & SATURDAY AUG. 13-14

1 LOT
BOYS' SHOES
You Can't Miss
at
\$2.00 pr.

1 LOT
GIRLS' SHOES
Don't Miss This
at
\$2.00 pr.

1 LOT
GIRLS' SHOES
A Real Bargain
at
\$3.00 pr.

1 LOT
LADIES' SHOES
SIDEWALK SPECIAL
\$1.00 pr.

ANOTHER LOT
at
\$2.00 pr.

LADIES'
SUMMERWEAR
1/2 and even
More Off

MAGIC BOOTS
Transforms your favorite
shoes into leg-hugging
boots.
Regular \$3.95
SIDEWALK SPECIAL
\$2.00 pr.

**SHORT SLEEVE
SPORT SHIRTS**
1/2 OFF

1 LOT
**FAMOUS NAME
SLAX & JEANS**
For Men and Boys
1/2 and More Off

**LADIES' PANTIES
BIKINI PANTIES**
Out of Our
Regular 69c Stock
2 pr. for only a Buck
Inside the store

1 LOT
TOWELS
1/2 OFF

1 LOT
TOWELS
1/3 OFF

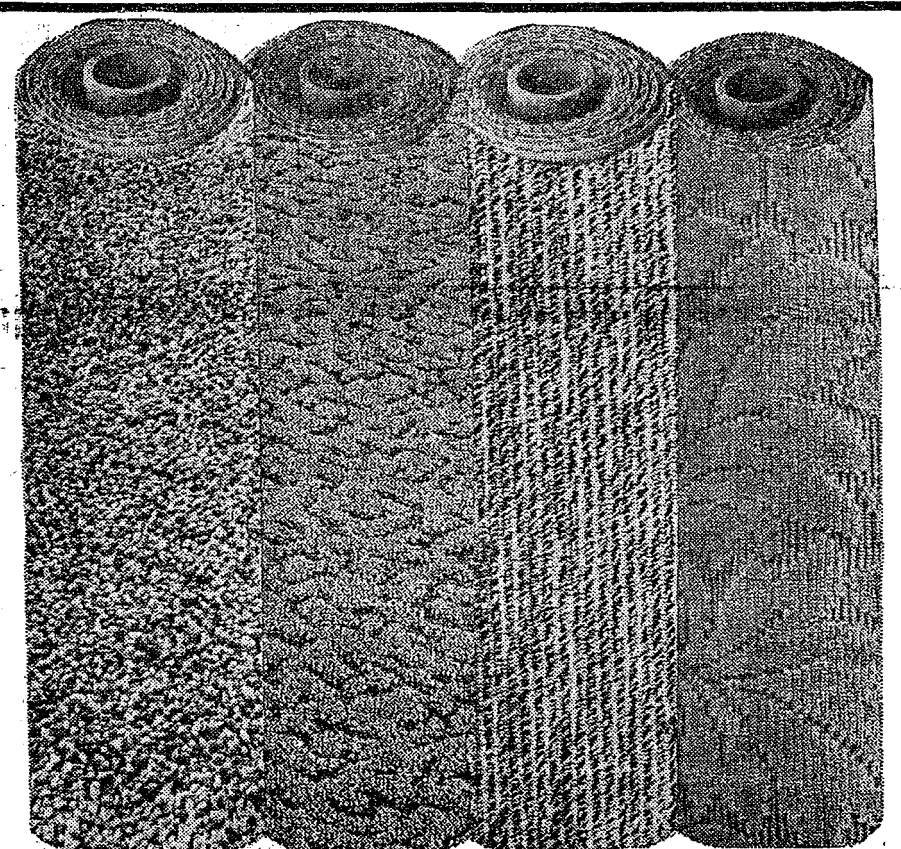
1 LOT
BEDSPREADS
1/2 OFF

LADIES' SLAX
Save Big Coin!

While You Are Saving
Real Dough on Our Sidewalk
Sale be sure to Shop for
New Fall & Winter Wear
It's Also Time to Shop for
BACK-TO-SCHOOL NEEDS
It's Easy at

DANCER'S

Chelsea's Friendly Dent. Store



Sidewalk Sale Specials

18" x 18" SERGED RUGS
29¢ - 3 for 69¢

27" x 36" SERGED RUGS
\$2.98

18" x 27" SERGED RUGS
85¢ - 3 for \$2.25

27" x 48" Flat Braid RUGS
Reg. \$9.50 - Sale \$6.98

CARPETING SPECIALS

Ends of Rolls, Discontinued Patterns, etc.

Many sizes and colors in Shags, Nylons, Acrilans

AT SIDEWALK SALE PRICES

DUTCH BOY PAINT

Discontinued Colors, Mixer's Errors. All first quality

QUARTS-69¢ - GALLONS-\$1.98

USED OAK & PINE DOORS

1 1/2" and 1 3/4" Standard Sizes

Many as good as new

\$1.00 ea.

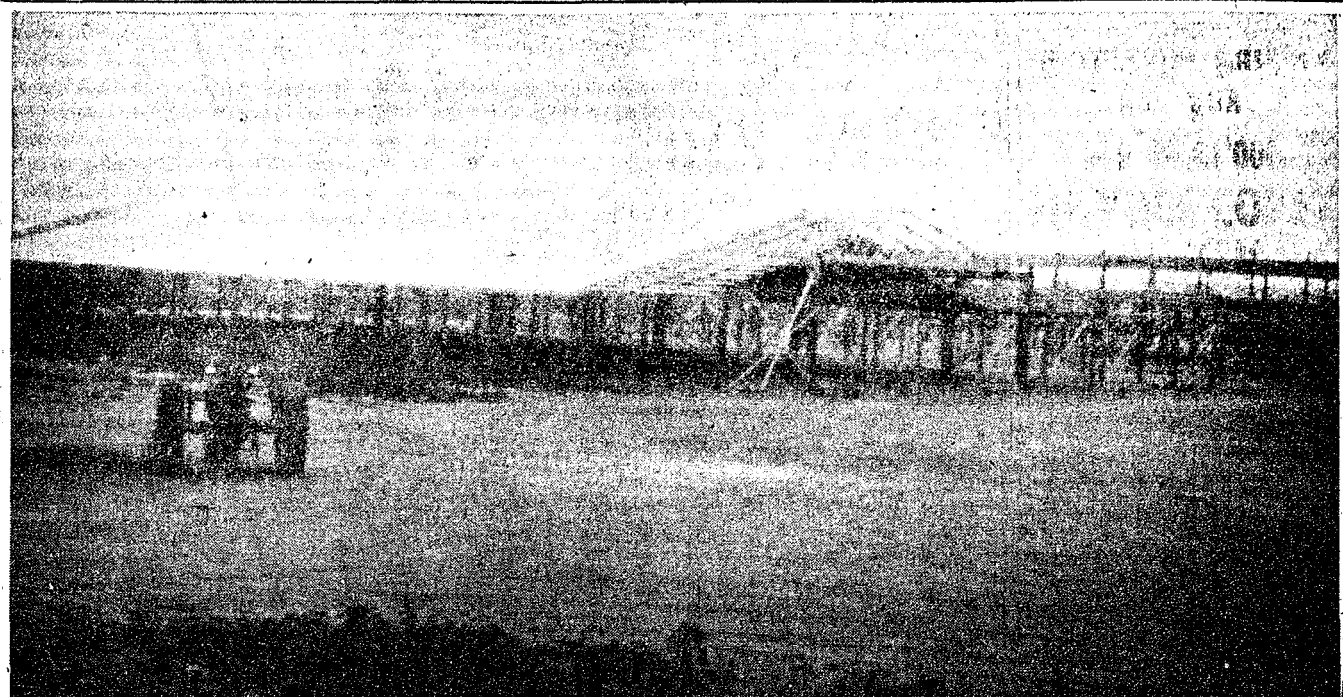
VISIT OUR SIDEWALK DISPLAYS

Many odds and ends items at give-away prices

MERKEL BROTHERS

Open Until 9 Friday Evening

Phone Chelsea 475-8621



THE NEW LIVESTOCK EXCHANGE is now well underway. Located on a 40-acre site one-fourth mile south of Pleasant Lake Rd. on M-52, the new headquarters of the Michigan Livestock Exchange will eventually handle 1,000 head of cattle and 1,000

head of small stock a week. Buildings now under construction include hog and sheep barns, a feeder cattle facility and an auction facility.

Michigan Livestock Exchange Building Program Making Rapid Progress

Beef 'em up with tested FEEDS

More profits per pound of gain! Get your steers ready for early market, with tested, fortified Cattle Feeds to beef 'em up . . . fast.

Complete feeding rations for all your livestock, poultry.

FARMERS' SUPPLY CO.
PHONE GR 5-5511

Construction of the new headquarters of the Michigan Livestock Exchange located 1/4 mile south of Pleasant Lake Rd. on M-52 is progressing satisfactorily according to R. H. Walton exchange general manager.

The \$300,000 facility will include roofed livestock pens with concrete floors, offices, and an auction pavilion. No target date for the completion of the facilities has yet been set.

Four of the six buildings plan-

ned are currently under construction but the Exchange is still waiting for architects plans for the office building and auction pavilion. "We hope to have all of it under cover before the snow" Walton said.

Now going up are the feeder cattle facility, the auction facility, the sheep barn and the hog barn.

Walton said that he hopes the exchange will eventually handle 1,000 cattle and 1,000 small stock (sheep, hogs and calves) a week.

Manchester Fair Tractor Pull Contest Scheduled Aug. 21

The Manchester Community fair will have a tractor pulling contest on Saturday, Aug. 21. Tractors will be weighed-in from 8 to 10:30 a.m. and eliminations will begin at 11 a.m. The top six tractors in each class will compete for trophies and prize money in the finals which begin at 7:30 p.m.

NAMESAKE

First produced in the 17th century, the bayonet took its name from the French city of Bayonne where it was made.

Herman Koenn Is Director on UDIA Board

Herman Koenn, 2010 Hayes Rd., was seated as a director of United Dairy Industry Association at the first meeting of the newly organized UDIA Board of Directors held in Chicago, July 22.

Eighteen member organizations and 81 directors were approved and seated at the organization meeting of UDIA. They represent approximately two-thirds of the nation's funded dairy promotional programs.

United Dairy Industry Association was organized in May, 1970. It operated with an interim board of 23 members designated by American Dairy Association (A.D.A.), National Dairy Council (N.D.C.) and Dairy Research, Inc. (DRINC.)

With sweeping restructuring of UDIA, approved June 12, a new board was authorized based upon proportionate representation according to the funds committed to UDIA and its approved promotional programs.

Other changes in the June 12 reorganization require UDIA to provide all dairy farmer promotional funds to ADA, NDC, and DRINC, to conduct membership liaison and to co-ordinate the total promotional effort of the three other organizations.

Assembly of God Children's Crusade Begins Next Monday

The summer program of the First Assembly of God, 14900 Old US-12 East will be featuring a Children's Crusade Aug. 16-20, from 7 to 8:30 p.m.

Mrs. Edythe Tarno and Mrs. Dorothy Thodeson will be directing the crusade which will include gospel stories illustrated with Munn Art and black light, gospel films, puppets, Bible drills, singing and a repeat of the Country Store.

Gospel dollars may be earned during the crusade by attendance, memory work and bringing friends to the meetings.

Sunday, Aug. 15, the pastor of the church, the Rev. T. B. Thodeson will speak at the 11 a.m. service. The evening services will feature guests from the Bethany Assembly in Adrian. Chuck Feltman, youth director, will speak at both the 6 and 7 p.m. service.

CHELSEA FINANCE CORP.
\$25 to \$1,000
For Any
Worthwhile Purpose

See or Call
FRANK HILL
at 475-8631

111 PARK STREET
CHELSEA, MICH.

WE GIVE S&H GREEN STAMPS WE GIVE S&H GREEN STAMPS WE GIVE S&H GREEN STAMPS WE GIVE S&H GREEN STAMPS WE GIVE S&H GREEN STAMPS

YOU DESERVE BOTH

1 BIG CASH SAVINGS 2 S&H GREEN STAMPS

Prices Effective Thursday, Aug. 12, 1971, through Sunday, Aug. 15, 1971.

GRADE A HOMOGENIZED

MILK 79^c gal.

FRESH & GOOD

COOKIES

4 pkgs. \$1⁰⁹

MORTON'S

SALT PELLETS

80-Lb. Bag \$2²³

SPARTAN

BREAD

Big 1 1/4-Lb. Loaf

4 for \$1⁰⁰

CIGARETTES

All Your Favorite Brands

\$3³⁹ Crtn.

CREAMY, RICH, SPARTAN

BUTTER

Only 81^c lb.

RED, RIPE, DELICIOUS

WATERMELONS

20-Lb. and Up

95^c

FROSTIE ROOT BEER

10-Oz. Returnable Bottles

8 pac 49^c plus deposit

Your Last Chance at This Special Price!

ICE COLD BEER

WINE - LIQUOR

RICK'S MARKET

"Your Spartan Store"

M-52 North of Chelsea

Phone 475-2898

Open 8 a.m. to 10 p.m. 7 Days A Week With Everyday Low Discount Prices

CHELSEA'S 15th ANNUAL

SIDEWALK DAYS

Bigger and Better Than Ever!

FRIDAY and SATURDAY AUGUST 13-14

Friday - 8:30 a.m. to 9 p.m.

Saturday - 8:30 a.m. to 6 p.m.

Your budget will get plenty of extra mileage at the low bargain prices you'll find on good seasonal merchandise of every kind. Many items have been specially purchased for this big annual bargain day event.



COME EARLY BOTH DAYS

and
Bring the family.
There are bargains
for everyone!